



RUNDTEST

FARBECHTHEITEN COLOUR FASTNESS

22

AUSWERTUNG / EVALUATION

	Seite / Page	
		Anmerkung
Waschechtheit 60°C - ISO 105-C06/C2S	2	Remarks
Waschechtheit 60°C - ISO 105-C08	3	Colour fastness to washing - ISO 105-C06/C2S
Schweissechtheit	5	Colour fastness to washing - ISO 105-C08
Wasserechtheit	7	Colour fastness to perspiration
Reibechtheit	11	Colour fastness to water
Reinigungsechtheit	13	Colour fastness to rubbing
Lichtechtheit	15	Colour fastness to dry cleaning
Bewertung von Papiermuster	17	Colour fastness to light
Lexikon	19	Assessment of paper pattern
	24	Dictionary

Allgemeines

Ganz zu Beginn soll vorweggenommen werden, dass für alle untersuchten Proben kein wirklich wahrer Wert (true value) bekannt ist. Die erhaltenen Werte können also nicht mit einem Referenzwert verglichen werden.

Anmerkung

Verschiedentlich zeigen einzelne Resultate eines Labors eine unerwartet hohe Abweichung zu den Resultaten anderer Labors. Werte mit einer Abweichung >1 Note werden in der Auswertung mit einem "x" gekennzeichnet.

Resultate, die sich statistisch nicht sinnvoll auswerten lassen (z.B. > 6) werden in der Auswertung mit einem "x" gekennzeichnet..

In der Auswertung sind sowohl der Mittelwert und die Standardabweichung als auch der Median angegeben. Der Median ist die Zahl die in der Mitte einer nach Grösse sortierter Zahlenreihe liegt, d.h. die eine Hälfte der Zahlen hat Werte die kleiner oder gleich sind als der Median und die andere Hälfte hat Werte die grösser oder gleich sind als der Median.

Es werden die Graphiken bezüglich Farbtonänderung und Anbluten - der nach Norm einzusetzenden Einzelfaser-Begleitgewebe - dargestellt.

In den vorliegenden Graphiken ist der Mittelwert (\emptyset) mittels einer durchgehenden Linie gekennzeichnet.

General

At first is to be mentioned that for all analysed samples the true value is not known. The determined values and results can therefore not be compared with a reference value.

Remark

Sometimes single results of a lab show an unusual high deviation compared to the results of other laboratories. Values with a deviation >1 class are being marked with an "x" in the evaluation.

Results that cannot be used for statistical calculations (such as > 6) will be marked in the evaluation with an "x".

In the evaluation the mean value and the standard deviation as well as the median value are indicated. The median is the figure in the middle of a range of figures which are sorted according to their size, i.e. half of the figures have values which are smaller or even to the median and the other half of the figures have values which are larger or even to the median.

Graphics are attached for the change in colour and the staining of the adjacent fabrics - the relevant single fabrics according to the standard.

In the following graphics the mean value (\emptyset) is visualized with a line straight across.

Muster: Gewebe, CO/PES, Farbe grün

Sample: Woven fabric, CO/PES, colour green

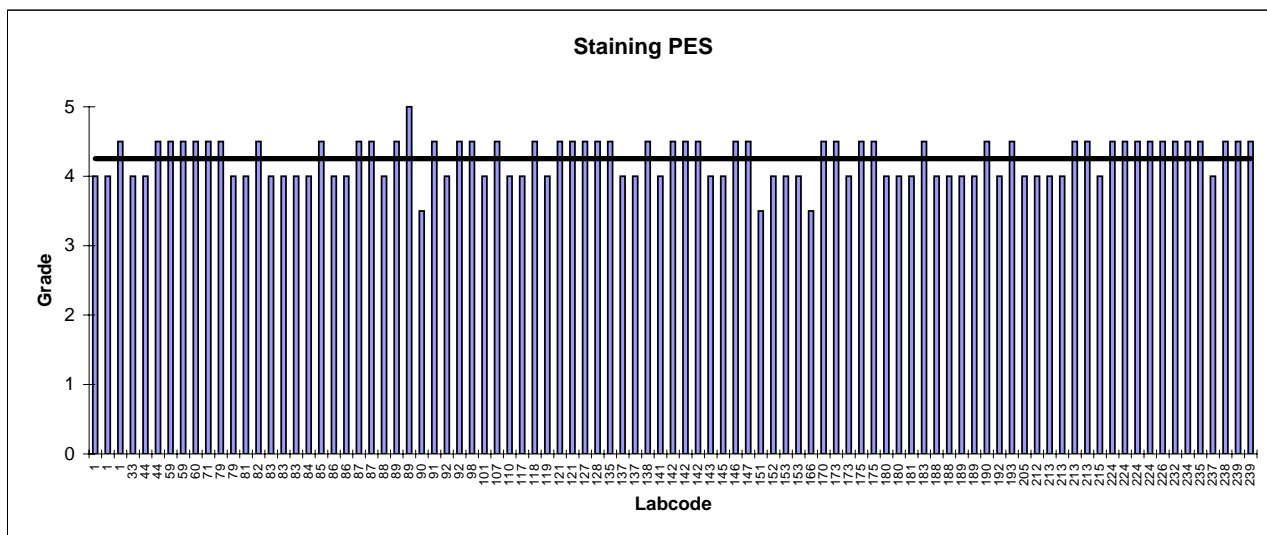
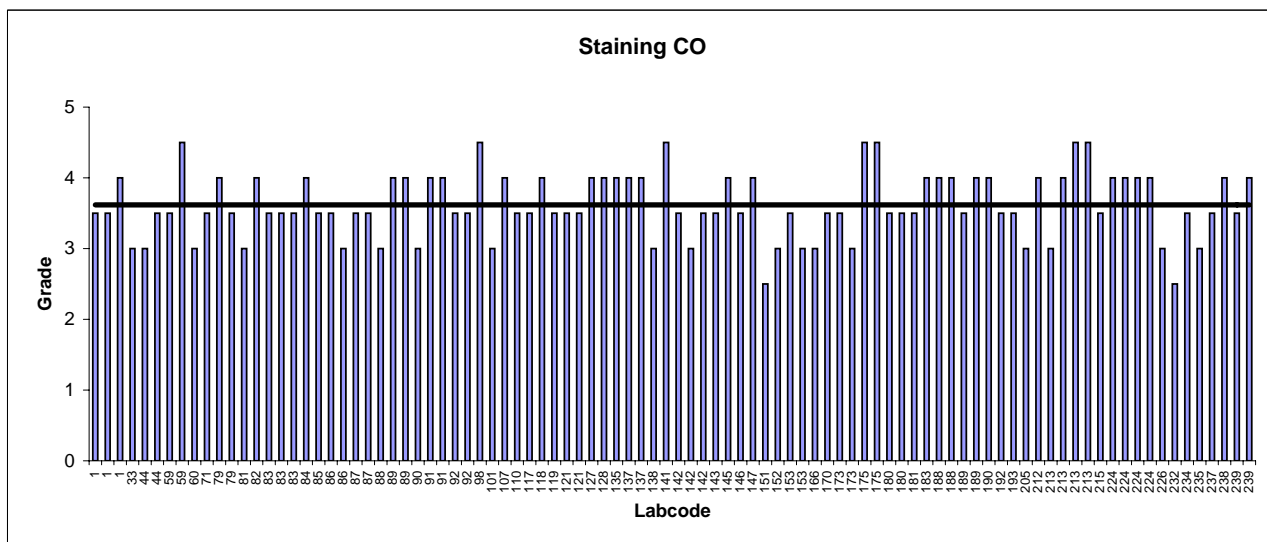
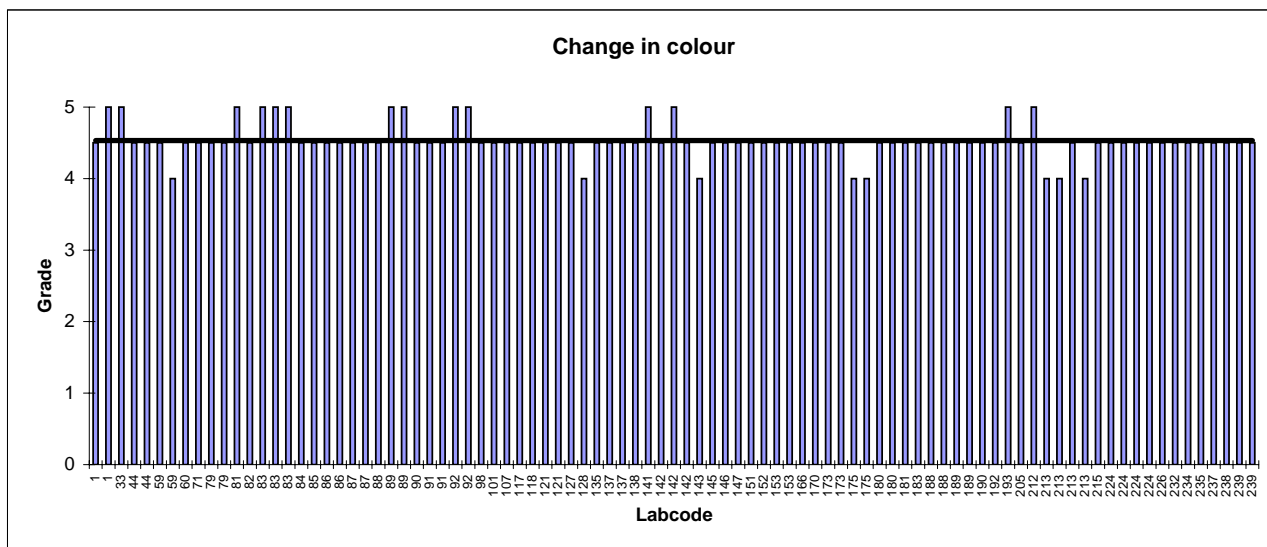
Waschechtheit 60°C (Haushaltswäsche & gewerbliche Wäsche) Fastness to washing 60°C (domestic and commercial laundering) (ISO 105-C06/C2S)														
Lab Code	Washing detergent	Single fibre	Multi fibre	Assessment		Change in colour	Staining							
				Visually	Col. meas.		CO	PES	PA	CV	WO	CA	CT	PAN
1	ECE + Perborate	x		x		4-5	3-4	4						
1	ECE + Perborate		x	x			3-4	4	3-4		4-5	4		4-5
1	ECE + Perborate	x			x	5	4	4-5						
33	ECE B					5	3	4	3		4-5	4		4-5
44	ECE + Perborate		x	x		4-5	3	4	3		4-5	4		4-5
44	ECE + Perborate	x		x		4-5	3-4	4-5						
59	ECE	x		x		4-5	3-4	4-5						
59	ECE	x			x	4	4-5	4-5						
60	ECE + Perborate		x	x		4-5	3	4-5	3-4		4-5	4-5		5
71	ECE	x		x		4-5	3-4	4-5						
79	ECE	x		x		4-5	4	4-5						
79	ECE		x	x		4-5	3-4	4	3	4-5			4-5	4-5
81	ECE		x	x		5	3	4	3-4		4-5	3-4		4-5
82		x		x		4-5	4	4-5						
83	ECE + Perborate	x		x		5	3-4	4						
83	ECE + Perborate	x		x		5	3-4	4						
83	ECE + Perborate	x		x		5	3-4	4						
84	ECE + Perborate		x	x		4-5	4	4	3-4	4-5			4-5	4-5
85	ECE		x	x		4-5	3-4	4-5	3	4-5			4-5	5
86	ECE + Perborate		x	x		4-5	3-4	4	3		4-5	4		4-5
86	ECE + Perborate		x	x		4-5	3	4	2-3		4	4		4-5
87	ECE + Perborate	x		x		4-5	3-4	4-5						
87	ECE + Perborate	x		x		4-5	3-4	4-5						
88	ECE + Perborate		x	x		4-5	3	4	3	4			4	4-5
89	ECE + Perborate	x		x		5	4	4-5						
89			x	x		5	4	5	3-4	4-5			5	5
90	ECE + Perborate		x	x		4-5	3	3-4	3-4	4-5	4			3
91	ECE + Perborate		x	x		4-5	4	4-5	3-4	4-5		4-5		4-5
91	ECE + Perborate	x		x		4-5	4				4-5			
92	ECE	x		x		5	3-4	4	3-4	4		4-5		4-5
92	ECE		x	x		5	3-4	4-5						
98	ECE + Perborate		x	x		4-5	4-5	4-5	4		4-5	4-5		4-5
101	ECE + Perborate		x	x		4-5	3	4	3-4		4-5	3-4		4-5
107	ECE		x	x		4-5	4	4-5	4	4-5			4-5	4-5
110	ECE + Perborate		x	x			3-4	4	3-4		4-5	4		4-5
117	ECE + Perborate		x	x		4-5	3-4	4	3-4		4-5	4		4-5
118	ECE + Perborate		x	x		4-5	4	4-5	3		4-5	4-5		4-5
119	ECE		x	x			3-4	4	3		4-5	4		4-5
121	ECE + Perborate	x		x		4-5	3-4	4-5						
121	ECE + Perborate		x	x		4-5	3-4	4-5	3	4			4-5	4-5
127	ECE + Perborate		x	x		4-5	4	4-5	4		4-5	4		4-5
128	ECE		x	x		4	4	4-5	3-4	4-5			5	4-5
135	ECE + Perborate		x	x		4-5	4	4-5	4		4-5	4		4-5
137	ECE		x	x		4-5	4	4	4		4-5	3		4-5
137			x		x	4-5	4	4	4		4	3		4-5
138	ECE + Perborate		x	x		4-5	3	4-5	3		4	4		4-5
141	ECE + Perborate		x	x		5	4-5	4	x 5		5	4-5		5
142	ECE		x	x		4-5	3-4	4-5	3		5	4		5
142	ECE		x	x		5	3	4-5	2-3		5	3-4		5
142	ECE		x	x		4-5	3-4	4-5	3		4-5	4		4-5
143	WOB		x	x		4	3-4	4	3		4	4		4-5
145	ECE		x	x		4-5	4	4	3		4-5	3-4	4	4-5
146	ECE + Perborate		x	x		4-5	3-4	4-5	3	4-5			4-5	4-5
147	ECE + Perborate		x	x		4-5	4	4-5	4		4-5	4-5		4-5
151	ECE + Perborate		x	x		4-5	2-3	3-4	2-3		4	3		4
152	ECE + Perborate		x	x		4-5	3	4	3-4		4-5	4-5		4-5
153	ECE Detergent B		x	x		4-5	3-4	4	3-4		4	4-5		4-5

Muster: Gewebe, CO/PES, Farbe grün

Sample: Woven fabric, CO/PES, colour green

Waschechtheit 60°C (Haushaltswäsche & gewerbliche Wäsche) Fastness to washing 60°C (domestic and commercial laundering) (ISO 105-C06/C2S)														
Lab Code	Washing detergent	Single fibre	Multi fibre	Assessment		Change in colour	Staining							
				Visually	Col. meas.		CO	PES	PA	CV	WO	CA	CT	PAN
153	ECE Detergent B		x		x	4-5	3	4	3-4		4-5	4		4-5
166	ECE + Perborate		x	x		4-5	3	3-4	2-3		4	3-4		4
170	ECE		x	x		4-5	3-4	4-5	3-4		4-5	4		5
173	ECE + Perborate		x	x		4-5	3-4	4-5	4		4-5	4-5		4-5
173	ECE + Perborate		x	x		4-5	3	4	3-4	4-5			4-5	4-5
175	ECE + Perborate		x	x		4	4-5	4-5	4		4-5	4		4-5
175	ECE + Perborate		x		x	4	4-5	4-5	4		4-5	4		5
180	ECE + Perborate		x	x		4-5	3-4	4	3	4-5			4	4-5
180	ECE + Perborate		x		x	4-5	3-4	4	3	4-5			4	4-5
181	ECE + Perborate		x	x		4-5	3-4	4	2-3	4-5			4-5	4-5
183	ECE		x	x		4-5	4	4-5	3	4-5		4-5		4-5
188	ECE + Perborate	x		x		4-5	4	4						
188	ECE + Perborate	x		x		4-5	4	4						
189	ECE + Perborate		x	x		4-5	3-4	4	3-4		4-5	4		4-5
189	ECE + Perborate		x		x	4-5	4	4	3-4		4-5	4		4-5
190	ECE + Perborate		x	x		4-5	4	4-5	4		4-5	4-5		4-5
192	ECE		x	x		4-5	3-4	4	4		4-5	4-5		5
193	ECE Detergent B		x	x		5	3-4	4-5	3-4		5	4		5
205	WOB		x	x		4-5	3	4	3		4-5	4-5		4-5
212	ECE + Perborate		x	x		5	4	4	3-4	4	4-5	3-4	4	4-5
213	ECE Detergent B		x	x		4	3	4	4		4-5	4		4-5
213	ECE Detergent B	x		x		4	4	4						
213	ECE Detergent B	x			x	4-5	4-5	4-5						
213	ECE Detergent B		x		x	4	4-5	4-5	4		4-5	4		4-5
215	ECE + Perborate		x	x		4-5	3-4	4	3		4-5	3-4		4-5
224	ECE Detergent B		x	x		4-5	4	4-5	3-4	4-5			4-5	5
224	ECE Detergent B		x	x		4-5	4	4-5	3-4	4-5			4-5	5
224	ECE Detergent B		x	x		4-5	4	4-5	3-4	4-5			4-5	5
224	ECE Detergent B		x	x		4-5	4	4-5	3-4	4-5			4-5	5
226	ECE + Perborate		x	x		4-5	3	4-5	3-4		4-5	4		4-5
232	ECE Detergent A		x	x		4-5	2-3	4-5	3		4-5	4		4-5
234	ECE + Perborate		x	x		4-5	3-4	4-5	4		4-5	4-5		4-5
235	ECE Detergent B		x	x		4-5	3	4-5	4		4	4-5		4-5
237			x	x		4-5	3-4	4	3-4		4-5	3-4		4-5
238	ECE + Perborate		x	x		4-5	4	4-5	4		5	4		5
239	ECE + Perborate		x	x		4-5	3-4	4-5	3-4		4-5	4		4-5
239	ECE + Perborate		x		x	4-5	4	4-5	3-4		4-5	4-5		5
n						91	94	93	73	22	54	55	19	72
∅						4.53	3.62	4.25	3.42	4.41	4.46	4.03	4.42	4.58
s						0.24	0.46	0.29	0.48	0.20	0.25	0.41	0.30	0.30
Median						4-5	3-4	4-5	3-4	4-5	4-5	4	4-5	4-5

Waschechtheit 60°C (Haushaltswäsche und gewerbliche Wäsche)
Color fastness to washing 60°C (Domestic and commercial laundering)
(ISO 105-C06/C2S)

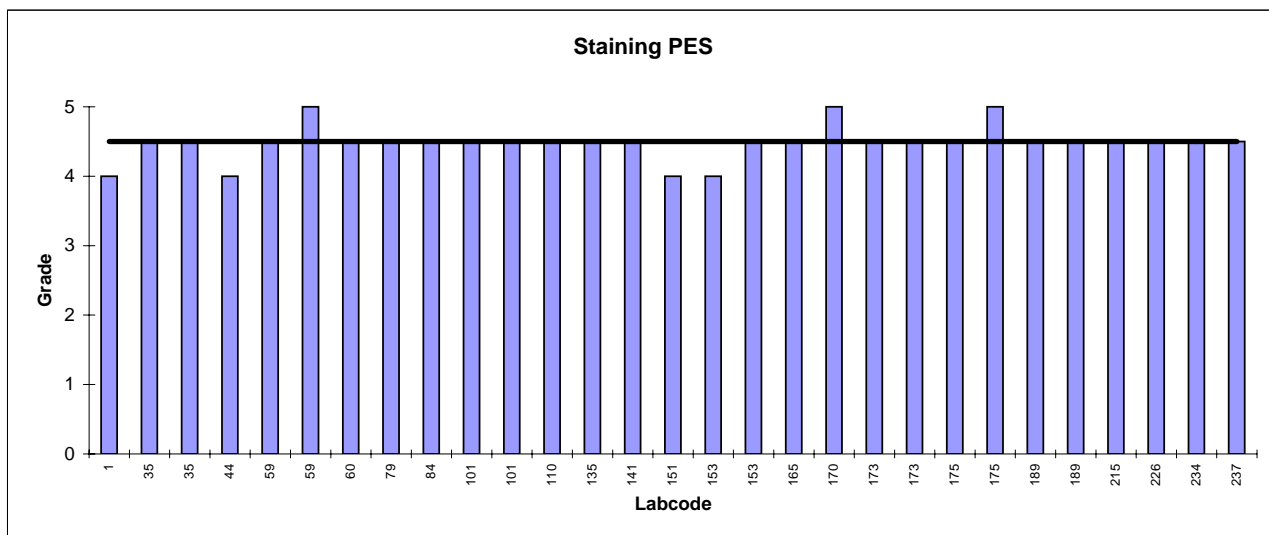
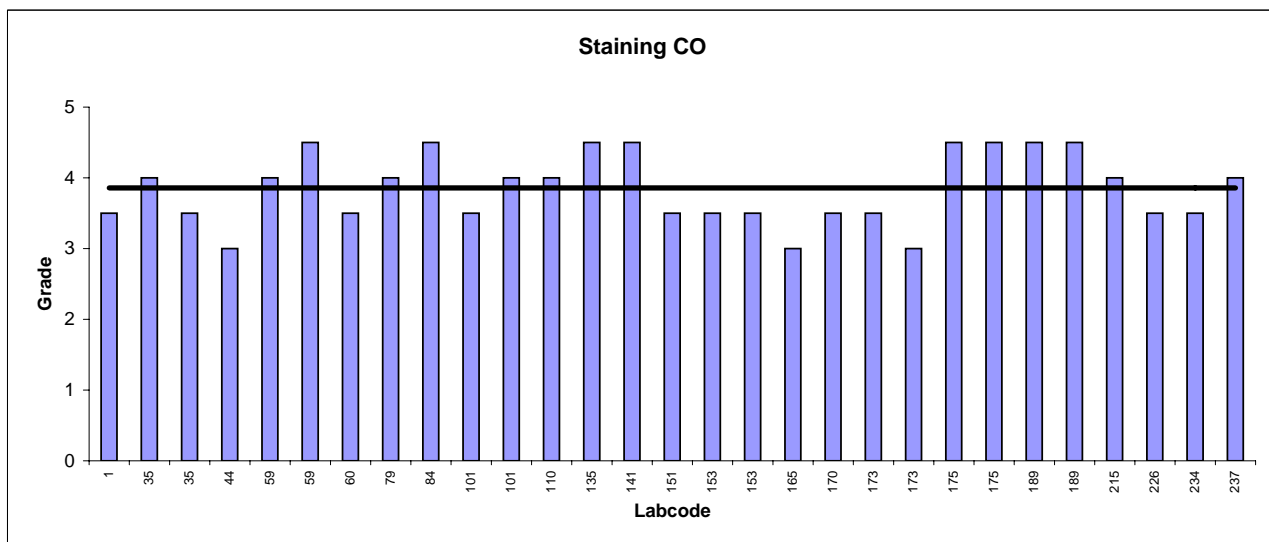
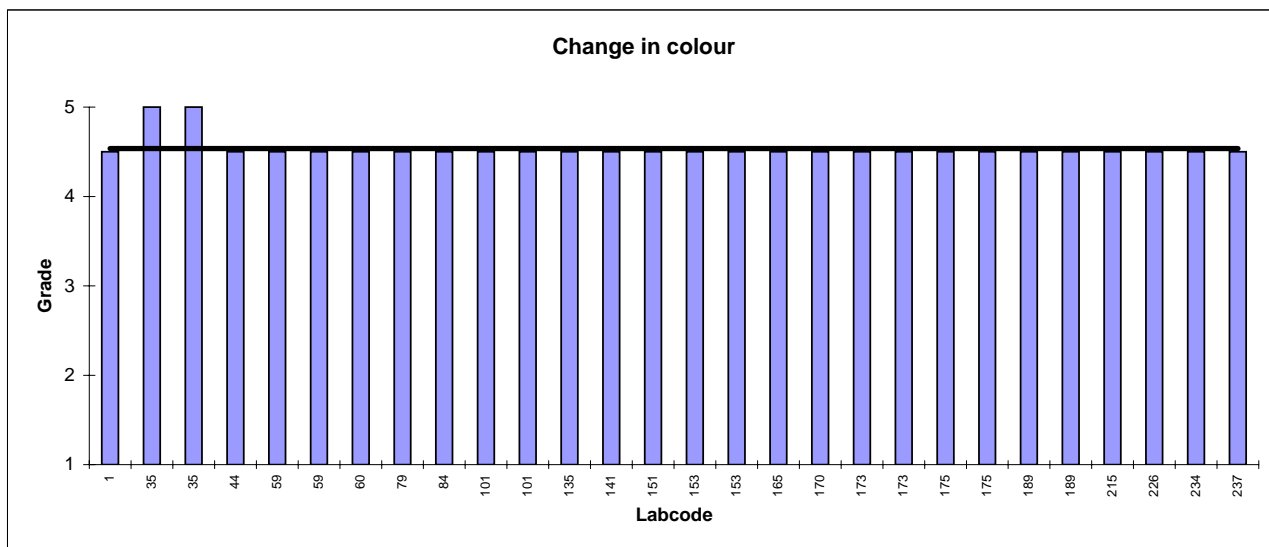


Muster: Gewebe, CO/PES, Farbe grün

Sample: Woven fabric, CO/PES, colour green

Waschechtheit 60°C (Haushaltswäsche & gewerbliche Wäsche) Fastness to washing 60°C (domestic and commercial laundering) (ISO 105-C08)														
Lab Code	Washing detergent	Single fibre	Multi fibre	Assessment		Change in colour	Staining							
				Visually	Col. meas.		CO	PES	PA	CV	WO	CA	CT	PAN
1	ECE + Perborate	x		x	x	4-5	3-4	4						
35	ECE + Perborate	x		x		5	4	4-5						5
35	ECE + Perborate		x		x	5	3-4	4-5			5			5
44	ECE + Perborate		x			4-5	3	4	3-4		4-5	4		4-5
59	ECE	x		x		4-5	4	4-5						
59	ECE	x			x	4-5	4-5	5						
60	ECE + Perborate		x	x		4-5	3-4	4-5	3-4		4-5	5		5
79	ECE		x	x		4-5	4	4-5	3-4	4-5			4-5	4-5
84	ECE + Perborate		x	x		4-5	4-5	4-5	4	4-5			4-5	4-5
101	ECE + Perborate		x	x		4-5	3-4	4-5	4-5		4-5	4-5		4-5
101	ECE + Perborate	x		x		4-5	4	4-5						
110	ECE + Perborate		x	x			4	4-5	4		4-5	4-5		4-5
135	ECE + Perborate		x	x		4-5	4-5	4-5	4-5		4-5	4-5		4-5
141	ECE + Perborate		x	x		4-5	4-5	4-5	4-5		5	4-5		5
151	ECE + Perborate		x	x		4-5	3-4	4	3-4		4	4		4-5
153	ECE Detergent B		x	x		4-5	3-4	4	4		4-5	4-5		4-5
153	ECE Detergent B		x		x	4-5	3-4	4-5	4-5		4-5	4-5		4-5
165	ECE + Perborate		x	x		4-5	3	4-5	3-4	4			4-5	5
170	ECE		x	x		4-5	3-4	5	4-5		4-5	5		5
173	ECE + Perborate		x	x		4-5	3-4	4-5	4		4-5	4-5		4-5
173	ECE + Perborate		x	x		4-5	3	4-5	3-4	4-5			4-5	4-5
175	ECE + Perborate		x	x		4-5	4-5	4-5	4-5		4-5	4		4-5
175	ECE + Perborate		x		x	4-5	4-5	5	4-5		5	4		5
189	ECE + Perborate		x	x		4-5	4-5	4-5	4-5		4-5	4-5		4-5
189	ECE + Perborate		x		x	4-5	4-5	4-5	4-5		5	4		4-5
215	ECE + Perborate		x	x		4-5	4	4-5	4		4-5	4		4-5
226	ECE + Perborate		x	x		4-5	3-4	4-5	3		4-5	4		4-5
234	ECE + Perborate		x	x		4-5	3-4	4-5	4		4-5	4-5		4-5
237	ECE + Perborate		x	x		4-5	4	4-5	4-5		4-5	4-5		4-5
n						27	28	28	24	4	20	20	4	25
Ø						4.54	3.86	4.50	4.04	4.38	4.58	4.38	4.50	4.64
s						0.13	0.51	0.24	0.46	0.25	0.24	0.32	0.00	0.23
Median						4-5	4	4-5	4	4-5	4-5	4-5	4-5	4-5

Waschechtheit 60°C (Haushaltswäsche und gewerbliche Wäsche)
Color fastness to washing 60°C (Domestic and commercial laundering)
(ISO 105-C08)



Muster: Gewebe, 100% CO, Farbe orange

Sample: Woven fabric, 100% CO, colour orange

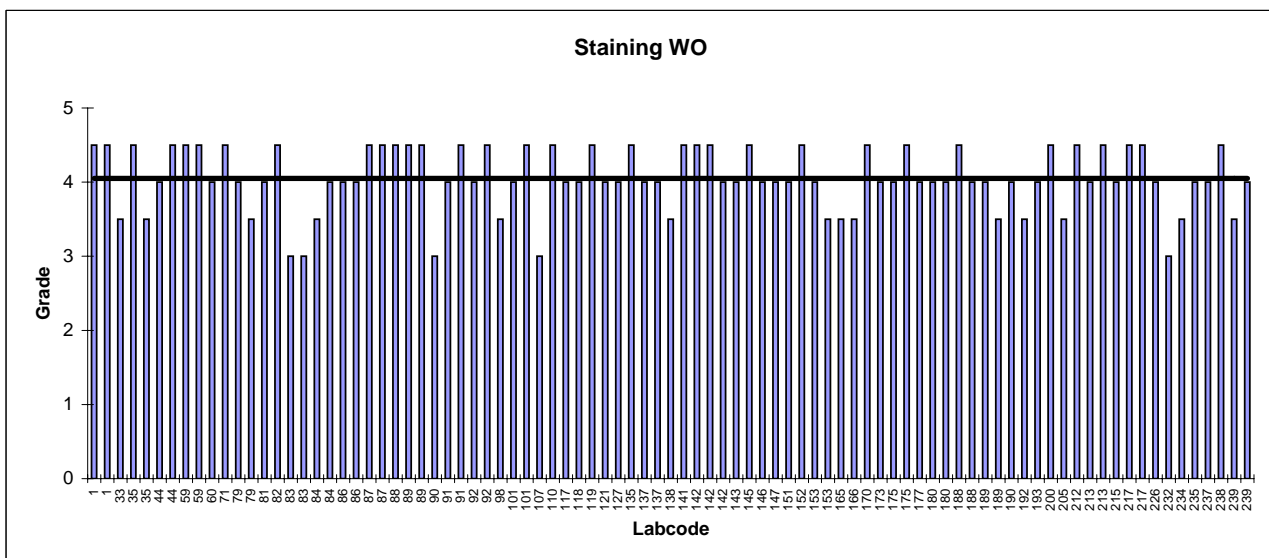
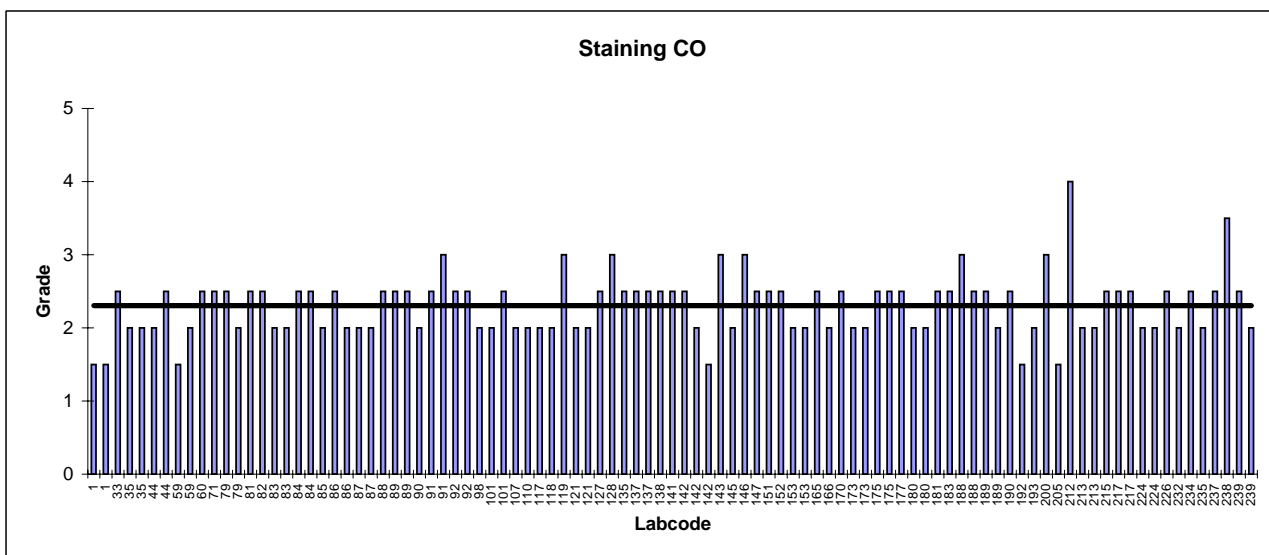
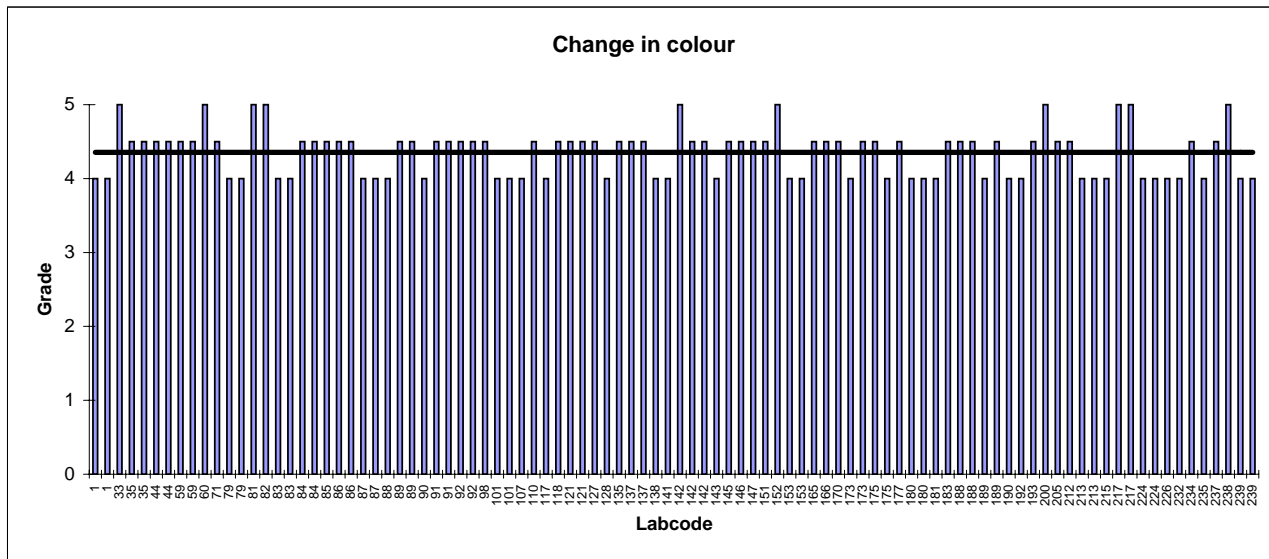
Schweissechtheit, alkalisch / Fastness to perspiration, alkaline (ISO 105-E04)														
Lab Code	Testing apparatus	Single fibre	Multi fibre	Assessment		Change in colour	Staining							
				Visually	Col. meas.		CO	PES	PA	CV	WO	CA	CT	PAN
1	Perspirometer	x		x	x	4	1-2					4-5		
1	Perspirometer		x	x		4	1-2	4-5	4	x	4-5	4-5	4	
33	Perspirometer		x	x		5	2-3	4-5	3-4			3-4	4	3-4
35	Perspiration tester	x		x		4-5	2					4-5		
35	Perspiration tester		x			4-5	2	4-5	3-4			3-4	5	4
44	Perspirometer	x				4-5	2	4	3-4			4	4	3-4
44	Perspirometer		x			4-5	2-3					4-5		
59	Rahmenbehälter	x		x		4-5	1-2					4-5		
59	Rahmenbehälter	x			x	4-5	2					4-5		
60	Perspirometer		x	x		5	2-3	4	3-4			4	4-5	3-4
71	Hydrotest	x		x		4-5	2-3					4-5		
79	Perspirometer	x		x		4	2-3					4		
79	Perspirometer		x	x		4	2	3-4	3			3-4	4-5	3-4
81	Perspirometer		x	x		5	2-3	4	3-4			4	4-5	3-4
82	Perspirometer	x		x		5	2-3					4-5		
83	Perspirometer	x		x		4	2					3		
83	Perspirometer	x		x		4	2					3		
84	Perspirometer		x	x		4-5	2-3	3-4	3-4			3-4	4-5	3-4
84	Perspirometer	x		x		4-5	2-3					4		
85	Heraeus UT 2160		x			4-5	2	4	x	2	2			4-5
86	Perspirometer		x	x		4-5	2-3	4	3-4			4	4	4
86	Perspirometer		x	x		4-5	2	4	3-4			4	4-5	4
87	Perspirometer 1	x		x		4	2					4-5		
87	Perspirometer 2	x			x	4	2					4-5		
88	Perspirometer	x		x		4	2-3					4-5		
89	Hydrotest	x		x		4-5	2-3					4-5		
89	Hydrotest		x	x		4-5	2-3	4-5	4			4-5	4-5	4-5
90	Incubator		x	x		4	2	3-4	4-5	3-4		3		3-4
91	Perspirometer		x	x		4-5	2-3	4	3-4			4	4-5	4
91	Perspirometer	x		x		4-5	3					4-5		
92	Perspirometer		x	x		4-5	2-3	4	4			4	4-5	3-4
92	Perspirometer	x		x		4-5	2-3					4-5		
98	Perspirometer		x	x		4-5	2	4-5	3-4			3-4	4	4
101	Perspirometer		x	x		4	2	4-5	4			4	4	4
101	Perspirometer	x		x		4	2-3					4-5		
107	Perspirometer		x	x		4	2	4	3-4			3	4-5	3-4
110	Perspirometer		x	x		4-5	2	4	3-4			4-5	4-5	4
117	Perspirometer		x	x		4	2	4	4			4	4-5	4
118	Perspirometer		x	x		4-5	2	4-5	4			4	4-5	4-5
119	Incubator		x	x		3	4	3-4				4-5	4-5	3-4
121	Hydrotest	x		x		4-5	2	4-5						
121	Hydrotest		x	x		4-5	2	4-5	4			4	4-5	4
127	Perspirometer		x	x		4-5	2-3	4	4			4	4	4
128	Hydrotest		x	x		4	3	5	5	x	5		4-5	4-5
135	Perspirometer		x	x		4-5	2-3	4-5	4			4-5	4-5	4-5
137	Perspirometer		x	x		4-5	2-3	4-5	4			4	4	4
137	Perspirometer		x		x	4-5	2-3	4-5	4			4	4	4
138	Perspiration tester PR-1		x	x		4	2-3	4-5	3-4			3-4	4-5	4
141	Perspirometer		x	x		4	2-3	4	4-5			4-5	5	4-5
142	Perspirometer		x	x		5	2-3	4-5	4			4-5	4-5	4
142	Perspirometer		x	x		4-5	2	4-5	3-4			4-5	4-5	4
142	Perspirometer		x	x		4-5	1-2	4	3			4	4	3-4
143	Perspirometer		x	x		4	3	4	3			4	4-5	4
145	Hydrotest		x	x		4-5	2	4-5	3-4			4-5	4-5	4-5
146	Perspirometer		x	x		4-5	3	4-5	4			4	4-5	4
147	Perspirometer		x	x		4-5	2-3	4-5	4			4	4-5	4
151	Perspirometer		x	x		4-5	2-3	4-5	4			4	4	4
152	Perspirometer		x	x		5	2-3	4	4			4-5	5	4
153	Perspirometer		x	x		4	2	4-5	4			4	4-5	4

Muster: Gewebe, 100% CO, Farbe orange

Sample: Woven fabric, 100% CO, colour orange

Schweissechtheit, alkalisch / Fastness to perspiration, alkaline (ISO 105-E04)														
Lab Code	Testing apparatus	Single fibre	Multi fibre	Assessment		Change in colour	Staining							
				Visually	Col. meas.		CO	PES	PA	CV	WO	CA	CT	PAN
153	Perspirometer		x		x	4	2	4	4		3-4	4		3-4
165	Hydrotest		x	x		4-5	2-3	4	3-4		3-4	4-5		3-4
166	Perspirometer		x	x		4-5	2	4	3		3-4	4		3-4
170	Perspirometer		x	x		4-5	2-3	5	3-4		4-5	5		4-5
173	Perspirometer		x	x		4	2	4-5	3-4		4	4-5		4
173	Perspirometer		x	x		4-5	2	4	3-4	2-3			4-5	4
175	Perspirometer		x	x		4-5	2-3	4-5	3-4		4	4-5		4
175	Perspirometer		x		x	4	2-3	4-5	4		4-5	5		4
177	Perspirometer		x	x		4-5	2-3	4	4		4	4		3-4
180	Perspirometer		x	x		4	2	4-5	3	2-3	4	4		4
180	Perspirometer		x		x	4	2	4-5	3	2-3	4	4		4
181	Perspirometer		x	x		4	2-3	4	4	2-3			4-5	4
183	Perspirometer		x	x		4-5	2-3	4-5	3-4	2-3		5		4-5
188	Perspirometer		x	x		4-5	3				4-5			
188	Perspirometer	x		x		4-5	2-3				4			
189	Perspirometer	x		x		4	2-3	4-5	4		4	4-5		4
189	Perspirometer		x		x	4-5	2	4	4		3-4	4-5		3-4
190	Perspirometer		x	x		4	2-3	4-5	4-5		4	4-5		4
192	Perspirometer		x	x		4	1-2	4	x	2	3-4	5		3-4
193	Perspirometer		x	x		4-5	2	4-5	3-4		4	4-5		4
200	Perspirometer	x				5	3				4-5			
205	Perspirometer		x	x		4-5	1-2	4-5	4-5		3-4	3-4		4
212	Perspirometer		x	x		4-5	x	4	4-5	5	x	4-5	4-5	4-5
213	Perspirometer		x		x	4	2	4-5	4		4	4		4
213	Perspirometer		x	x		4	2	4-5	4		4-5	4		4-5
215	Perspirometer		x	x		4	2-3	3-4	3-4		4	4-5		3-4
217	Perspirometer			x		5	2-3	4-5	4-5		4-5	4-5		4
217	Perspirometer			x		5	2-3	4-5	4-5		4-5	4-5		4
224	Perspirometer		x	x		4	2	4-5	3-4	2		4-5	4	
224	Perspirometer		x	x		4	2	4-5	3-4	2		4-5	4	
226	Perspirometer		x	x		4	2-3	4	3-4		4	4-5		3-4
232	Perspirometer		x	x		4	2	4-5	3-4		3	4-5		4
234	Perspirometer		x	x		4-5	2-3	4	4		3-4	4-5		4
235	Perspirometer		x	x		4	2	4	3-4		4	4		4
237	Perspirometer		x	x		4-5	2-3	4	4		4	4-5		4
238	Perspirometer		x	x		5	3-4	5	5		4-5	5		4-5
239	Perspirometer		x	x		4	2-3	4	4		3-4	4-5		4
239	Perspirometer		x		x	4	2	4-5	4		4	4-5		4-5
n						96	97	76	75	12	89	71	7	71
Ø						4.35	2.30	4.27	3.75	3.00	4.05	4.41	4.36	3.94
s						0.32	0.42	0.33	0.54	1.09	0.43	0.32	0.24	0.33
Median						4-5	2-3	4-5	4	2-3	4	4-5	4-5	4

Schweissechtheit, alkalisch / Colour fastness to perspiration, alkaline
(ISO 105-E04)



Muster: Gewebe, 100% CO, Farbe orange

Sample: Woven fabric, 100% CO, colour orange

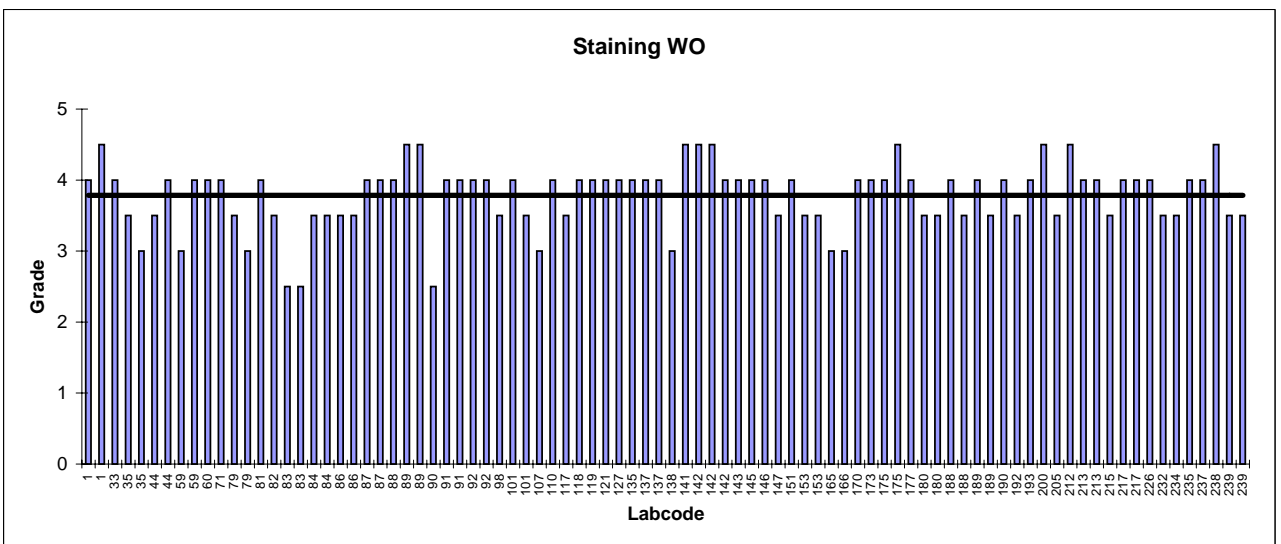
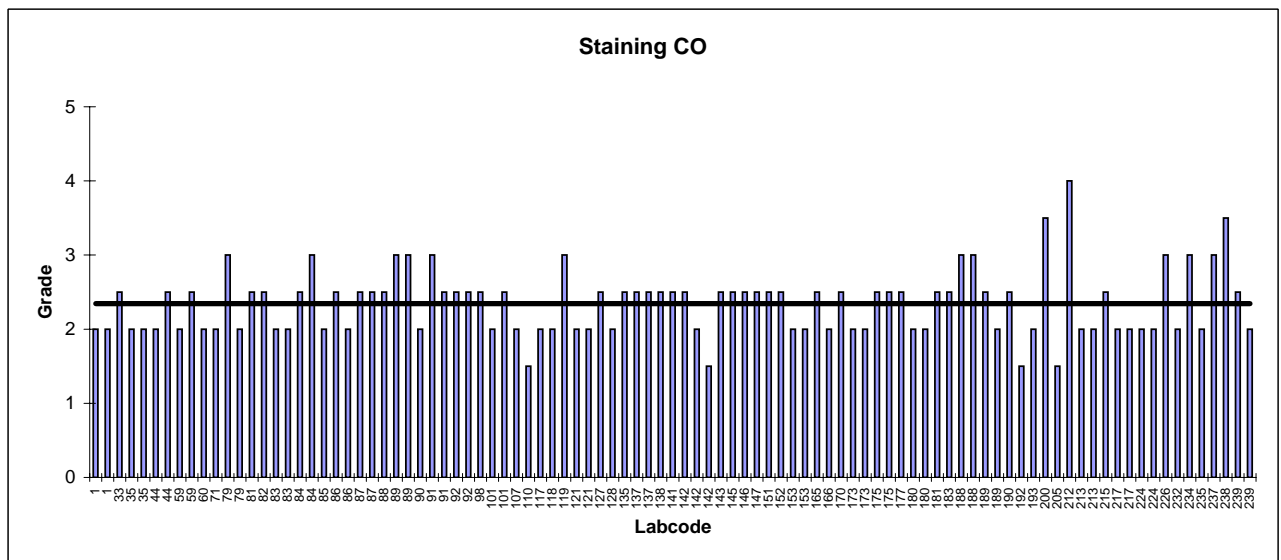
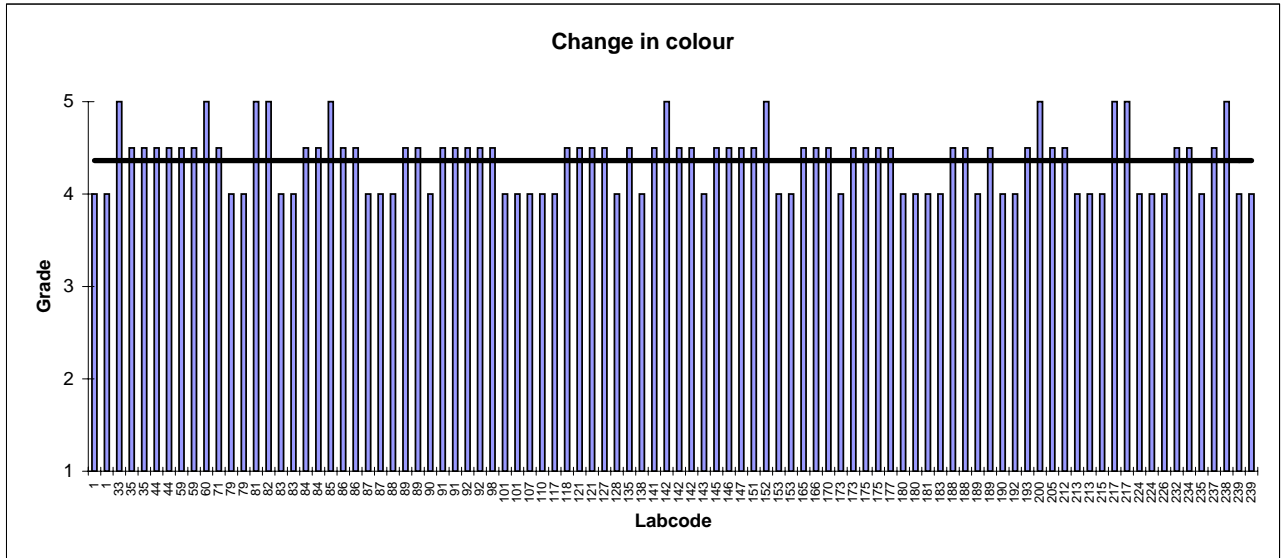
Schweissechtheit, sauer / Fastness to perspiration, acid (ISO 105-E04)														
Lab Code	Testing apparatus	Single fibre	Multi fibre	Assessment		Change in colour	Staining							
				Visually	Col. meas.		CO	PES	PA	CV	WO	CA	CT	PAN
1	Perspirometer	x		x	x	4	2					4		
1	Perspirometer		x	x	x	4	2	4-5	3	x	4	4-5	4	
33	Perspirometer		x	x	x	5	2-3	4	2-3			4	4	4
35	Perspiration tester	x		x	x	4-5	2					3-4		
35	Perspiration tester		x	x	x	4-5	2	4-5	2-3			3	5	4
44	Perspirometer		x	x	x	4-5	2	4	3-4			3-4	4	3-4
44	Perspirometer	x		x	x	4-5	2-3					4		
59	Rahmenbehälter	x		x		4-5	2					3		
59	Rahmenbehälter	x			x	4-5	2-3					4		
60	Perspirometer		x	x	x	5	2	4-5	2			4	4-5	4
71	Hydrotest	x		x	x	4-5	2					4		
79	Perspirometer	x		x	x	4	3					3-4		
79	Perspirometer		x	x	x	4	2	3	2			3	4-5	3
81	Perspirometer		x	x	x	5	2-3	4	3-4			4	4-5	3-4
82	Perspirometer	x		x	x	5	2-3					3-4		
83	Perspirometer	x		x	x	4	2				x	2-3		
83	Perspirometer	x		x	x	4	2				x	2-3		
84	Perspirometer		x	x	x	4-5	2-3	3-4	3			3-4	4-5	4
84	Perspirometer	x		x	x	4-5	3					3-4		
85	Heraeus UT 2160		x	x	x	5	2	4	3-4	2-3			4-5	4
86	Perspirometer		x	x	x	4-5	2-3	4	2-3			3-4	4	4
86	Perspirometer		x	x	x	4-5	2	4	2			3-4	4-5	4
87	Perspirometer 1	x		x	x	4	2-3					4		
87	Perspirometer 2	x			x	4	2-3					4		
88	Perspirometer	x		x	x	4	2-3					4		
89	Hydrotest	x		x	x	4-5	3					4-5		
89	Hydrotest		x	x	x	4-5	3	4-5	3			4-5	4-5	4-5
90	Incubator		x			4	2	4	x	4-5	3-4	x	2-3	3
91	Perspirometer		x	x	x	4-5	3	4	3-4			4	4-5	4
91	Perspirometer	x		x	x	4-5	2-3					4		
92	Perspirometer		x	x	x	4-5	2-3	4	4			4	4-5	4
92	Perspirometer	x		x	x	4-5	2-3					4		
98	Perspirometer		x	x	x	4-5	2-3	3-4	3			3-4	4	4
101	Perspirometer		x	x	x	4	2	4-5	4			4	4-5	4-5
101	Perspirometer	x		x	x	4	2-3					3-4		
107	Perspirometer		x	x	x	4	2	4	2-3			3	4	3-4
110	Perspirometer		x	x	x	4	1-2	3-4	x	1-2		4	4-5	3-4
117	Perspirometer		x	x	x	4	2	4	3-4			3-4	4-5	4
118	Perspirometer		x	x	x	4-5	2	4-5	3			4	4-5	4-5
119	Incubator		x	x	x	3	4	3-4				4	4-5	4
121	Hydrotest	x		x	x	4-5	2	4-5						
121	Hydrotest		x	x	x	4-5	2	4	4			4	4-5	4
127	Perspirometer		x	x	x	4-5	2-3	4	3-4			4	4	4
128	Hydrotest		x	x	x	4	2	4	3	x	4-5		4-5	4
135	Perspirometer		x	x	x	4-5	2-3	4	3-4			4	4-5	4
137	Perspirometer		x	x	x		2-3	4-5	4			4	4	4-5
137	Perspirometer	x			x		2-3	4-5	4			4	4	4-5
138	Perspiration tester PR-1		x	x	x	4	2-3	4-5	3			3	4-5	4
141	Perspirometer		x	x	x	4-5	2-3	4	x	4-5		4-5	5	4-5
142	Perspirometer		x	x	x	5	2-3	4-5	3			4-5	4-5	4-5
142	Perspirometer		x	x	x	4-5	2	4-5	3			4-5	4-5	4
142	Perspirometer		x	x	x	4-5	1-2	4	2-3			4	4	3-4
143	Perspirometer		x	x	x	4	2-3	4	3			4	4	4
145	Hydrotest		x	x	x	4-5	2-3	4-5	3-4			4	4-5	4-5
146	Perspirometer		x	x	x	4-5	2-3	4	2-3			4	4-5	4
147	Perspirometer		x	x	x	4-5	2-3	4-5	3			3-4	4-5	4
151	Perspirometer		x	x	x	4-5	2-3	4-5	4			4	4	4
152	Perspirometer		x	x	x	5	2-3	4	4				4	5
153	Perspirometer		x	x	x	4	2	4-5	3-4			3-4	4-5	4

Muster: Gewebe, 100% CO, Farbe orange

Sample: Woven fabric, 100% CO, colour orange

Schweissechtheit, sauer / Fastness to perspiration, acid (ISO 105-E04)														
Lab Code	Testing apparatus	Single fibre	Multi fibre	Assessment		Change in colour	Staining							
				Visually	Col. meas.		CO	PES	PA	CV	WO	CA	CT	PAN
153	Perspirometer		x		x	4	2	4	3-4		3-4	4		3-4
165	Hydrotest		x			4-5	2-3	4	3-4		3	4-5		3-4
166	Perspirometer		x	x		4-5	2	3-4	2		3	4		3-4
170	Perspirometer		x	x		4-5	2-3	5	3		4	5		4-5
173	Perspirometer		x	x		4	2	4	2-3		4	4-5		3-4
173	Perspirometer		x	x		4-5	2	4-5	3	3			4-5	4
175	Perspirometer		x	x		4-5	2-3	4-5	3		4	4-5		4-5
175	Perspirometer		x		x	4-5	2-3	4-5	2-3		4-5	5		4-5
177	Perspirometer		x	x		4-5	2-3	3-4	3		4	4		3-4
180	Perspirometer		x	x		4	2	4-5	2	2-3	3-4	4-5		4-5
180	Perspirometer		x		x	4	2	4-5	2	2-3	3-4	4-5		4-5
181	Perspirometer		x	x		4	2-3	4	3	2-3			4-5	4
183	Perspirometer		x	x		4	2-3	4-5	4	2-3		5		4-5
188	Perspirometer	x		x		4-5	3				4			
188	Perspirometer	x		x		4-5	3				3-4			
189	Perspirometer		x	x		4	2-3	4-5	4		4	4-5		4
189	Perspirometer		x		x	4-5	2	4	3-4		3-4	5		4
190	Perspirometer		x	x		4	2-3	4-5	3-4		4	4-5		4-5
192	Perspirometer		x	x		4	1-2	4-5	3		3-4	5		3-4
193	Perspirometer		x	x		4-5	2	4-5	3		4	4-5		4
200	Perspirometer	x				5	3-4				4-5			
205	Perspirometer		x	x		4-5	1-2	4-5	x 4-5		3-4	3-4		4
212	Perspirometer		x	x		4-5	x 4	4-5	x 4-5	x 4	4-5	4-5	4-5	4-5
213	Perspirometer		x		x	4	2	4-5	3-4		4	4		4-5
213	Perspirometer		x	x		4	2	4-5	3		4	4		4
215	Perspirometer		x	x		4	2-3	3-4	3		3-4	4-5		3-4
217	Perspirometer			x		5	2	4	3-4		4	4-5		4
217	Perspirometer			x		5	2	4	3-4		4	4-5		4
224	Perspirometer		x	x		4	2	4-5	2-3	2			4-5	3-4
224	Perspirometer		x	x		4	2	4-5	2-3	2			4-5	3-4
226	Perspirometer		x	x		4	3	4	3-4		4	4-5		3-4
232	Perspirometer		x	x		4-5	2	4-5	4		3-4	4-5		4
234	Perspirometer		x	x		4-5	3	4	4		3-4	4-5		4
235	Perspirometer		x	x		4	2	4-5	2-3		4	4		4
237	Perspirometer		x	x		4-5	3	4	4		4	4-5		4
238	Perspirometer		x	x		5	3-4	5	x 5		4-5	4-5		4-5
239	Perspirometer		x	x		4	2-3	4	4		3-4	4-5		4
239	Perspirometer		x		x	4	2	4-5	3-4		3-4	4-5		3-4
n						94	97	76	75	12	88	69	8	73
Ø						4.36	2.35	4.20	3.23	2.96	3.78	4.40	4.56	3.98
s						0.33	0.44	0.37	0.71	0.84	0.46	0.32	0.18	0.38
Median						4-5	2-3	4	3	2-3	4	4-5	4-5	4

Schweissechtheit, sauer / Colour fastness to perspiration, acid
(ISO 105-E04)



Muster: Gewirke, PA/EL, Farbe braun

Sample: Knitted fabric, PA/EL, colour brown

Wasserechtheit / Fastness to water (ISO 105-E01)														
Lab Code	Testing apparatus	Single fibre	Multi fibre	Assessment		Change in colour	Staining							
				Visually	Col. meas.		CO	PES	PA	CV	WO	CA	CT	PAN
1	Perspirometer	x		x		4-5			4-5		4-5			
1	Perspirometer		x	x		4-5	4-5	4-5	4-5	4-5	4-5	4-5		
33	Perspirometer		x	x		5	5	5	4-5		5	5		5
35	Perspiration tester	x		x		5			5		4-5			
35	Perspiration tester		x	x		4-5	5	5	5		5	5		5
44	Perspirometer	x		x		4-5	5	5	5		5	5		5
44	Perspirometer		x	x		4-5	5		4-5					
59	Rahmenbehälter					5	5		4-5					
59	Rahmenbehälter					4-5	5		5					
60	Perspirometer		x	x		5	5	5	5		5	5		5
71	Hydrotest	x		x		4-5	4-5			4-5				
79	Perspirometer	x		x		4-5	4-5		4-5					
79	Perspirometer		x	x		4-5	4-5	4-5	4-5		4-5	4-5		4-5
81	Perspirometer		x	x		5	5	5	5		5	5		5
82	Perspirometer	x		x		5	5	5	5		5			
83	Perspirometer	x		x		5	5		5					
83	Perspirometer	x		x		5	5		5					
84	Perspirometer		x	x		5	5	5	4-5		4-5	5		5
84	Perspirometer	x		x		5			4-5	4-5				
85	Heraeus UT 2160		x	x		4-5	5	5	4-5	5			5	5
86	Perspirometer		x	x		4-5	5	5	5		5	5		5
86	Perspirometer		x	x		4-5	5	5	4-5		4-5	5		5
87	Perspirometer 1	x		x		4-5	4-5		4-5					
87	Perspirometer 2	x			x	4-5	4-5		4-5					
88	Perspirometer	x		x		4			4-5		4-5			
89	Hydrotest	x		x		5	5		5					
89	Hydrotest		x	x		5	5	5	5		5	5		5
90	Incubator		x	x		4-5	4-5	4-5	4-5	4-5	4-5			4-5
91	Perspirometer		x	x		5	5	5	5		5	5		5
91	Perspirometer	x		x		4-5	4-5				4-5			
92	Perspirometer		x	x		5	5	5	5		5	5		5
92	Perspirometer	x		x		5	4-5		4-5					
98	Perspirometer		x	x		4-5	4-5	4-5	4-5		4-5	4-5		4-5
101	Perspirometer		x	x		4-5	4-5	4-5	4-5		4-5	4-5		4-5
101	Perspirometer	x		x		4	4-5		4-5					
107	Perspirometer		x	x		5	5	5	5		5	5		5
110	Perspirometer		x	x		4-5	5	5	5		4-5	5		5
117	Perspirometer		x	x		4	4-5	4-5	4-5		4-5	4-5		4-5
118	Perspirometer		x	x		4-5	5	5	4-5		4-5	4-5		5
119	Incubator		x	x			4-5	4-5	4-5		4-5			4-5
121	Hydrotest	x		x		4-5			4-5		4-5			
121	Hydrotest		x	x		4-5	4-5	4-5	4-5		4-5	4-5		4-5
127	Perspirometer		x	x		4-5	4-5	4-5	4-5		4-5	4-5		4-5
128	Hydrotest		x	x		5	4-5	5	5	5	5	5		5
135	Perspirometer		x	x		4-5	4-5	4-5	4-5		4-5	4-5		4-5
137	Perspirometer		x	x		4	4-5	4-5	4-5		4-5	4		4-5
137	Perspirometer		x		x	4-5	4-5	4-5	4-5		4-5	4		4-5
138	Perspiration tester PR-1					4-5	4-5	4-5	4-5		4-5	4-5		4-5
141	Perspirometer		x	x		5	5	5	5		5	5		5
142	Perspirometer		x	x		4-5	5	5	5		5	5		5
142	Perspirometer		x	x		5	5	5	4-5		5	5		5
142	Perspirometer		x	x		5	5	5	5		5	5		5
143	Perspirometer		x	x		4	4-5	4-5	4-5		4-5	4-5		4-5
145	Hydrotest		x	x		5	5	5	5		5	5	4-5	
146	Perspirometer		x	x		5	5	5	5		4-5	5		4-5
147	Perspirometer		x	x		4-5	4-5	4-5	4-5		4-5	4-5		4-5
151	Perspirometer		x	x		5	4-5	4-5	4-5		4-5	4-5		4-5
152	Perspirometer		x	x		5	5	5	5		5	5		5
153	Perspirometer		x	x		4-5	4-5	4-5	4-5		4-5	4-5		4-5

Muster: Gewirke, PA/EL, Farbe braun

Sample: Knitted fabric, PA/EL, colour brown

Wasserechtheit / Fastness to water (ISO 105-E01)														
Lab Code	Testing apparatus	Single fibre	Multi fibre	Assessment		Change in colour	Staining							
				Visually	Col. meas.		CO	PES	PA	CV	WO	CA	CT	PAN
153	Perspirometer		x		x	4-5	4-5	5	4-5		4-5	4-5		4-5
165	Hydrotest		x	x		4-5	4-5	5	4-5		4-5	5		5
166	Perspirometer		x	x		5	4-5	4-5	4-5		4-5	4-5		4-5
170	Perspirometer		x	x		4-5	5	5	5		5	5		5
173	Perspirometer		x	x		4-5	5	4-5	4-5		4-5	4-5		4-5
173	Perspirometer		x	x		5	5	5	4	4-5			5	5
175	Perspirometer		x	x		5	5	5	5		4-5	5		5
175	Perspirometer		x		x	5	5	5	5		4-5	5		5
177	Perspirometer		x	x		4-5	4-5	4-5	4-5		4-5	4-5		4-5
180	Perspirometer		x	x		4-5	4-5	5	4-5	4-5	4-5	4-5		5
180	Perspirometer		x		x	4-5	4-5	5	4-5	4-5	4-5	4-5		5
181	Perspirometer		x	x		4-5	4-5	4-5	4-5	4-5			4-5	4-5
183	Perspirometer		x	x		5	5	5	5	5		5		5
188	Perspirometer	x		x		5	5				4-5			
188	Perspirometer	x		x		4-5	4-5				4-5			
189	Perspirometer		x	x		4-5	5	5	5		5	5		5
189	Perspirometer		x		x	5	5	5	5		5	4-5		5
190	Perspirometer		x	x		4-5	4-5	4-5	4-5		4-5	4-5		4-5
192	Perspirometer		x	x		4-5	5	5	5		5	5		5
193	Perspirometer		x	x		4-5	5	5	4-5		5	5		5
200	Perspirometer	x				5	5		5		5			
205	Perspirometer		x	x		5	4-5	4-5	4-5		4-5	4-5		4-5
212	Perspirometer		x	x		5	5	5	5	4-5	5	5	4-5	5
213	Perspirometer		x	x		4-5	4-5	4-5	4-5		4-5	4-5		4-5
213	Perspirometer		x		x	5	5	4	5		4	5		5
215	Perspirometer		x	x		4-5	4-5	4-5	4-5		4-5	4-5		4-5
217	Perspirometer		x	x		5	5	4-5	5		4-5	5		5
217	Perspirometer			x		5	5	4-5	5		4-5	5		5
224	Perspirometer		x	x		5	5	5	4-5	5			5	5
224	Perspirometer		x	x		5	5	5	4-5	5			5	5
226	Perspirometer		x	x		4-5	4-5	4-5	4-5	4-5	4-5	4-5	4-5	4-5
232	Perspirometer		x	x		3-4	5	5	5		5	5		5
234	Perspirometer		x	x		4-5	4-5	4-5	4-5		4-5	4-5		4-5
235	Perspirometer		x	x		4-5	4-5	4-5	4-5		4-5	4-5		4-5
237	Perspirometer		x	x		4-5	4-5	4-5	4-5		4-5	4-5		4-5
238	Perspirometer		x	x		5	5	5	5		5	5		5
239	Perspirometer		x	x		5	5	5	5		5	5		5
239	Perspirometer		x		x	4-5	5	5	5		5	5		5
n						96	92	76	93	15	77	68	8	73
Ø						4.68	4.78	4.78	4.70	4.67	4.68	4.76	4.75	4.79
s						0.32	0.25	0.26	0.26	0.24	0.25	0.28	0.27	0.25
Median						4-5	5	5	4-5	4-5	4-5	5	4-5	5

Muster: Gewebe, 100% CO, Farbe rot

Sample: Woven fabric, 100% CO, colour red

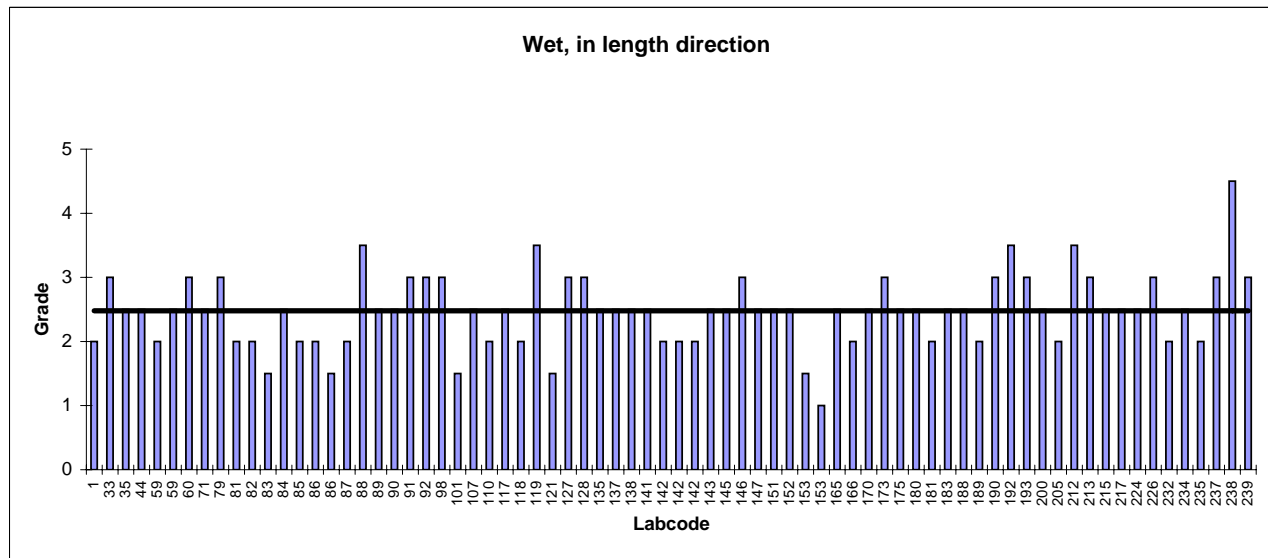
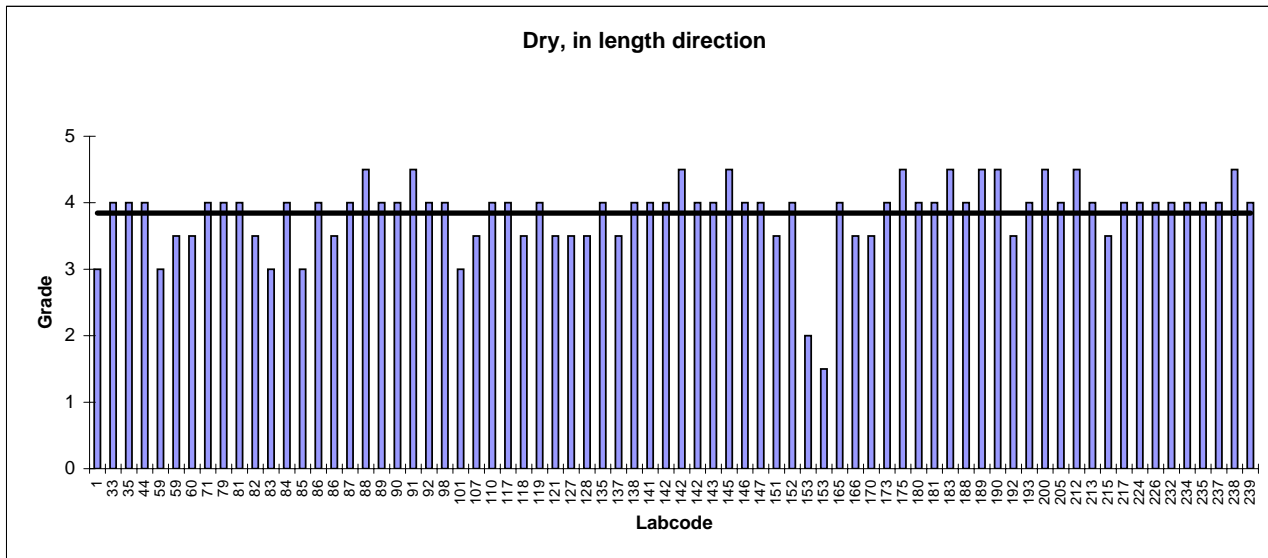
Reibechtheit / Fastness to rubbing (ISO 105-X12)										
Lab Code	Edition of standard	Download force [N]	Testing conditions		Assessment		Dry		Wet	
			°C	% rel. Humidity	Visually	Colour measurement	Length	Cross	Length	Cross
1	2002	9	21	65	x	x	3	3-4	2	2
33	2001	9	20	65	x		4	4-5	3	3-4
35	2003	9	20	65	x		4	4	2-3	2
44	2001	9	20	65	x		4	4	2-3	2-3
59	2002	9	20	65	x		3	3	2	2
59	2002	9	20	65		x	3-4	3-4	2-3	2
60	2007	9	20	65	x		3-4		3	
71	2002	9	21	65	x		4	4	2-3	2-3
79	2001	9	20	65	x		4	4	3	3
81	2002	9	21	65	x		4	4	2	2
82	1993	9	20	65	x		3-4	4	2	2
83	2005	9	20	65	x		3	3	1-2	1-2
84	2003	9	25	65	x		4	4	2-3	2-3
85	2002	9	20	65	x		3	4	2	2
86	2002	9	20	65	x		4	4	2	2
86	2002	9	20	65	x		3-4	4	1-2	1-2
87	2001	9	20	63	x		4	4	2	2
88	1995	9	22	65	x		4-5	4-5	3-4	3
89		9	20	65	x		4	4	2-3	2-3
90	2001	9	20	65	x		4	4	2-3	2-3
91	?	9	21	65	x		4-5	4-5	3	3
92	2003	9	20	60	x		4	4	3	3
98	?	9	22	65			4	4	3	3
101	2001	9	20	65	x		3	3-4	1-2	2
107	2003	9	20.5	63.6	x		3-4	3-4	2-3	2-3
110	1993	9	20	65	x		4	4	2	2
117	1995	9	24	50	x		4	4	2-3	2-3
118	2002	9	20	65	x		3-4	3-4	2	2
119	?	9	21	65	x		4	3-4	3-4	3
121	2000	9	23	65	x		3-4	3-4	1-2	1-2
127	2003	9	20	65	x		3-4	3-4	3	3
128	2003	9	22	63	x		3-4	3-4	3	2-3
135	2001	9	20	65	x		4	4	2-3	2-3
137	2003	9			x		3-4	3-4	2-3	2-3
138	2001	9	20	65	x		4	4	2-3	2-3
141	?	9	20	65	x		4	4	2-3	2-3
142	2001	9	20	65	x		4	4	2	2
142	2001	9	20	65	x		4-5	4-5	2	2
142	2001	9	20	65	x		4	4	2	2
143	?		27	59	x		4	4	2-3	2-3
145	2002	9	20	65	x		4-5	4-5	2-3	2-3
146	2001	9	20	65			4	4-5	3	3-4
147	?	9	20	65	x		4	4	2-3	2
151	2003	9	20	65	x		3-4	3-4	2-3	2-3
152	2001	9	20	65	x		4	4	2-3	3
153	2003	9	20	65	x		x 2	x 2	1-2	1-2
153	2003	9	20	65		x	x 1-2	x 1-2	x 1	x 1
165	2002	9	20	65	x		4	4	2-3	2-3
166	1995	9	20	65	x		3-4	4	2	2
170	2003	9	20	65	x		3-4	3-4	2-3	2-3
173	2001	9	20	65	x		4	4-5	3	2-3
175	2001	9	21	63	x		4-5	4-5	2-3	2-3
180	2002	9	19.7	65.4	x	x	4	4	2-3	2-3
181	2002	9	20	65	x		4	4-5	2	2
183					x		4-5	4-5	2-3	3
188	2001	9	19.9	65	x		4		2-3	
189	?	9	20	65	x		4-5	4-5	2	2
190	2001	9	20	65	x		4-5	4-5	3	3
192	2002	9			x		3-4	x 2	3-4	2

Muster: Gewebe, 100% CO, Farbe rot

Sample: Woven fabric, 100% CO, colour red

Reibechtheit / Fastness to rubbing (ISO 105-X12)										
Lab Code	Edition of standard	Download force [N]	Testing conditions		Assessment		Dry		Wet	
			°C	% rel. Humidity	Visually	Colour measurement	Length	Cross	Length	Cross
193	?	9	26		x		4		3	
200	2001	9	22	60	x		4-5	4-5	2-3	2-3
205	2001	9	20	65	x		4	3-4	2	2
212	2002	9	20.9	65	x		4-5	4-5	3-4	3-4
213	?	9	20	65	x		4	4	3	3
215	2001	9	20	65	x		3-4	4	2-3	2
217	1995	9			x		4	4-5	2-3	2-3
224	2001	9	21	65	x		4	4	2-3	2-3
226	2001	9	20	65	x		4	4	3	3
232	2001	9	25	64	x		4	4	2	2
234	2002	9	20	65	x		4	4	2-3	2-3
235	2001	9	20	65	x		4	4	2	2
237		9	20.1	64.8	x		4	4	3	3
238	2001	9	20	67	x		4-5	4-5	x 4-5	x 4-5
239	2002	9	20	65	x		4	4-5	3	3
n							74	71	74	71
Ø							3.84	3.91	2.48	2.42
s							0.52	0.58	0.57	0.56
Median							4	4	2-3	2-3

Reibechtheit / Colour fastness to rubbing (ISO 105 X12)



Muster: Gewebe, CO/PES, Farbe dunkelblau

Sample: Woven fabric, CO/PES, colour dark blue

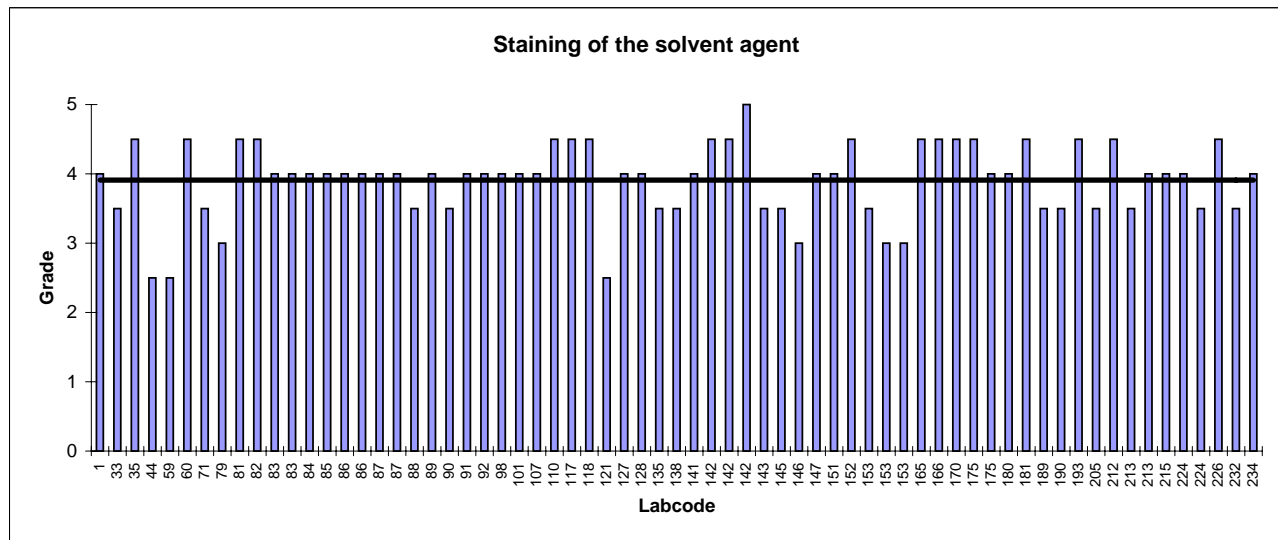
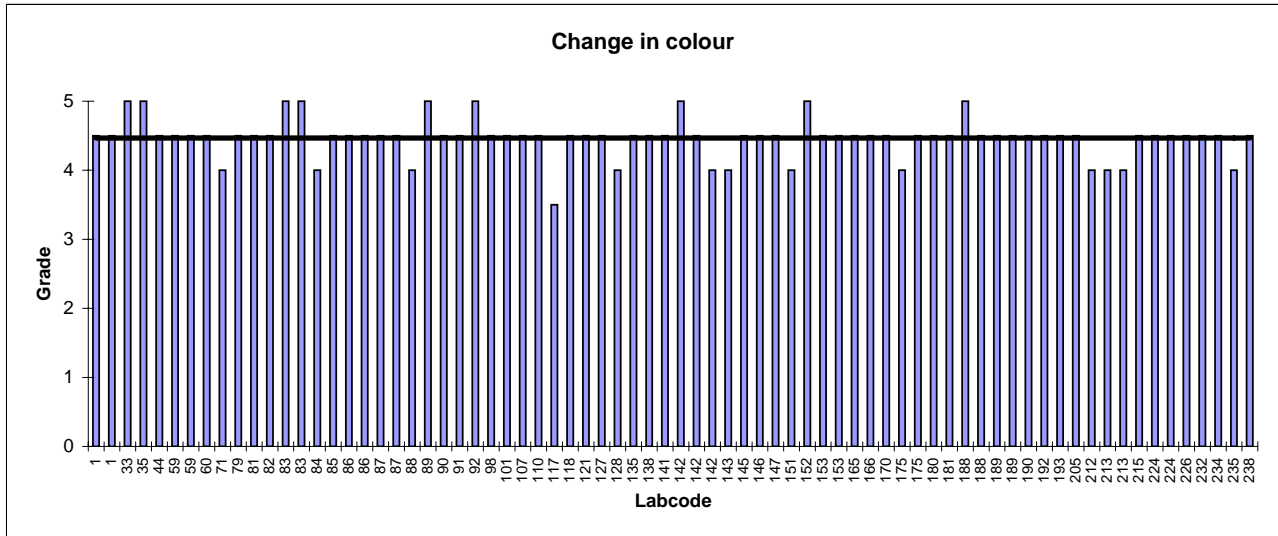
Trockenreinigungsechtheit / Fastness to dry cleaning (ISO 105-D01)						
Lab Code	Testing apparatus	Solvent agent	Assessment		Change in colour	Staining of the solvent agent
			Visually	Colour measurement		
1	Linitest	Perchloroethylen	x		4-5	4
1	Linitest	Perchloroethylen		x	4-5	
33	Washwheel	Perchloroethylen	x		5	3-4
35	Rotawash	Perchloroethylen	x		5	4-5
44	Gyrowash	Perchloroethylen	x		4-5	x 2-3
59	Linitest	Perchloroethylen	x		4-5	x 2-3
59	Linitest	Perchloroethylen		x	4-5	
60	Linitest	Perchloroethylen	x		4-5	4-5
71	Lintest	Perchloroethylen	x		4	3-4
79	Gyrowash	Perchloroethylen	x		4-5	3
81	Linitest	Perchloroethylen	x		4-5	4-5
82	SJK Laundry Tester C-16	Perchloroethylen	x		4-5	4-5
83	Linitest	Perchloroethylen	x		5	4
83	Linitest	Perchloroethylen	x		5	4
84	Linitest	Perchloroethylen	x		4	4
85	Gyrowash	Perchloroethylen	x		4-5	4
86	Washwheel	Perchloroethylen	x		4-5	4
86	Washwheel	Perchloroethylen	x		4-5	4
87	Linitest 1	Perchloroethylen	x		4-5	4
87	Linitest 2	Perchloroethylen	x		4-5	4
88	Linitest	Perchloroethylen	x		4	3-4
89	Linitest	Perchloroethylen	x		5	4
90	Gyrowash	Perchloroethylen	x		4-5	3-4
91	Launder-O-meter	Perchloroethylen	x		4-5	4
92	Linitest	Perchloroethylen			5	4
98	Launder-O-meter	Perchloroethylen	x		4-5	4
101	Linitest	Perchloroethylen	x		4-5	4
107	Launder-O-meter	Perchloroethylen	x		4-5	4
110	Launder-O-meter	Perchloroethylen	x		4-5	4-5
117	Linitest	Perchloroethylen	x		3-4	4-5
118	Atlas LP2	Perchloroethylen	x		4-5	4-5
121	Becherglas	Perchloroethylen	x		4-5	x 2-3
127	Autowash	Perchloroethylen	x		4-5	4
128	Scourotester	Perchloroethylen	x		4	4
135	Gyrowash	Perchloroethylen	x		4-5	3-4
138	Atlas LP2	Perchloroethylen	x		4-5	3-4
141	Gyrowash	Perchloroethylen	x		4-5	4
142	Ahiba Nuance	Perchloroethylen	x		5	4-5
142	Ahiba Nuance	Perchloroethylen	x		4-5	4-5
142	Ahiba Nuance	Perchloroethylen	x		4	5
143	Launder-O-meter	Perchloroethylen	x		4	3-4
145	Linitest	Perchloroethylen	x		4-5	3-4
146	Gyrowash	Perchloroethylen	x		4-5	3
147	Linitest	Perchloroethylen	x		4-5	4
151	Rotawash	Perchloroethylen	x		4	4
152	Gyrowash	Perchloroethylen	x		5	4-5
153	Gyrowash	Perchloroethylen	x		4-5	3-4
153	Gyrowash	Perchloroethylen		x	4-5	
165	Linitest	Perchloroethylen	x		4-5	3
166	Gyrowash	Perchloroethylen	x		4-5	3
170	Gyrowash	Perchloroethylen	x		4-5	4-5
175	Launder-O-meter	Perchloroethylen	x		4	4-5
175	Launder-O-meter	Perchloroethylen		x	4-5	4-5
180	Linitest	Perchloroethylen	X		4-5	4-5
181	Linitest	Perchloroethylen	x		4-5	4
188	Skaker ES-20	Perchloroethylen	x		5	
188	Skaker ES-20	Perchloroethylen	x		4-5	
189	Linitest	Perchloroethylen	x		4-5	4
189	Linitest	Perchloroethylen		x	4-5	

Muster: Gewebe, CO/PES, Farbe dunkelblau

Sample: Woven fabric, CO/PES, colour dark blue

Trockenreinigungsechtheit / Fastness to dry cleaning (ISO 105-D01)						
Lab Code	Testing apparatus	Solvent agent	Assessment		Change in colour	Staining of the solvent agent
			Visually	Colour measurement		
190	Launder-O-meter	Perchlorethylen	x		4-5	4-5
192	EXTERN	Perchlorethylen	x		4-5	
193	Gyrowash	Perchlorethylen	x		4-5	3-4
205	Launder-O-meter	Perchlorethylen	x		4-5	3-4
212	Linitest Atlas	Perchlorethylen	x		4	4-5
213	Atlas Launder-O-Meter	Perchlorethylen	x		4	3-4
213	Atlas Launder-O-Meter	Perchlorethylen		x	4	4-5
215	Washtec	Perchlorethylen	x		4-5	3-4
224	Launder-O-meter	Perchlorethylen	x		4-5	4
224	Launder-O-meter	Perchlorethylen	x		4-5	4
226	Autowash	Perchlorethylen	x		4-5	4
232	Launder-O-meter	Perchlorethylen	x		4-5	3-4
234	Gyrowash	Perchlorethylen	x		4-5	4-5
235	Gyrowash	Perchlorethylen	x		4	3-4
238	Launder-O-meter	Perchlorethylen	x		4-5	4
n					73	66
Ø					4.47	3.91
s					0.29	0.55
Median					4-5	4

Trockenreinigungsechtheit / Colour fastness to dry cleaning
(ISO 105-D01)

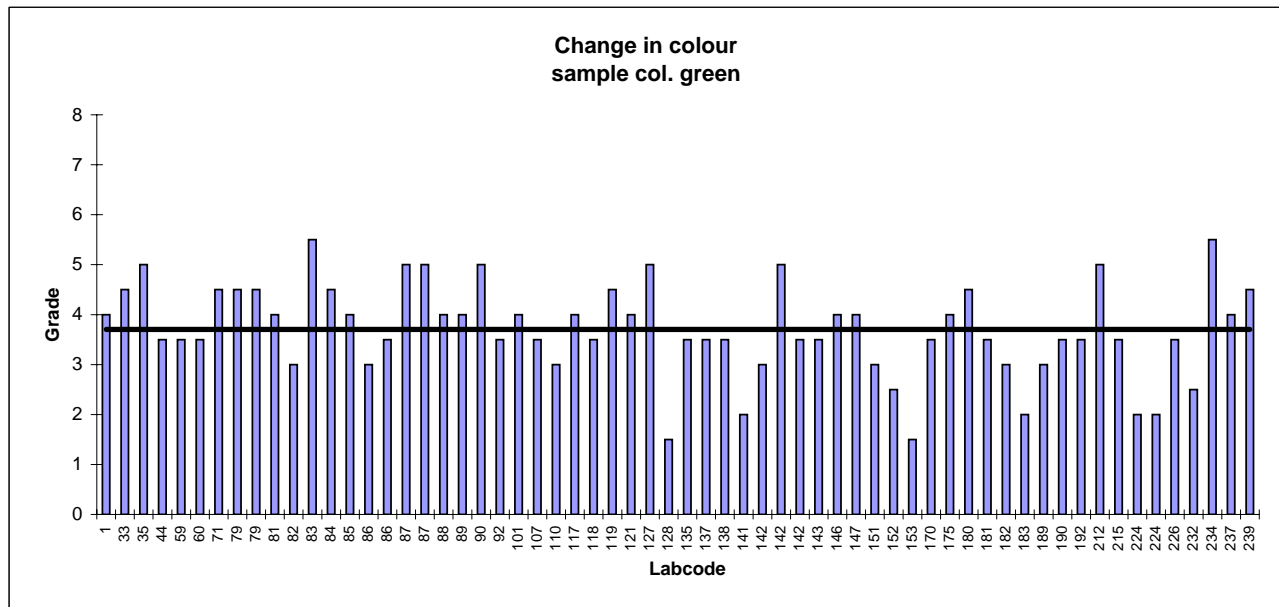
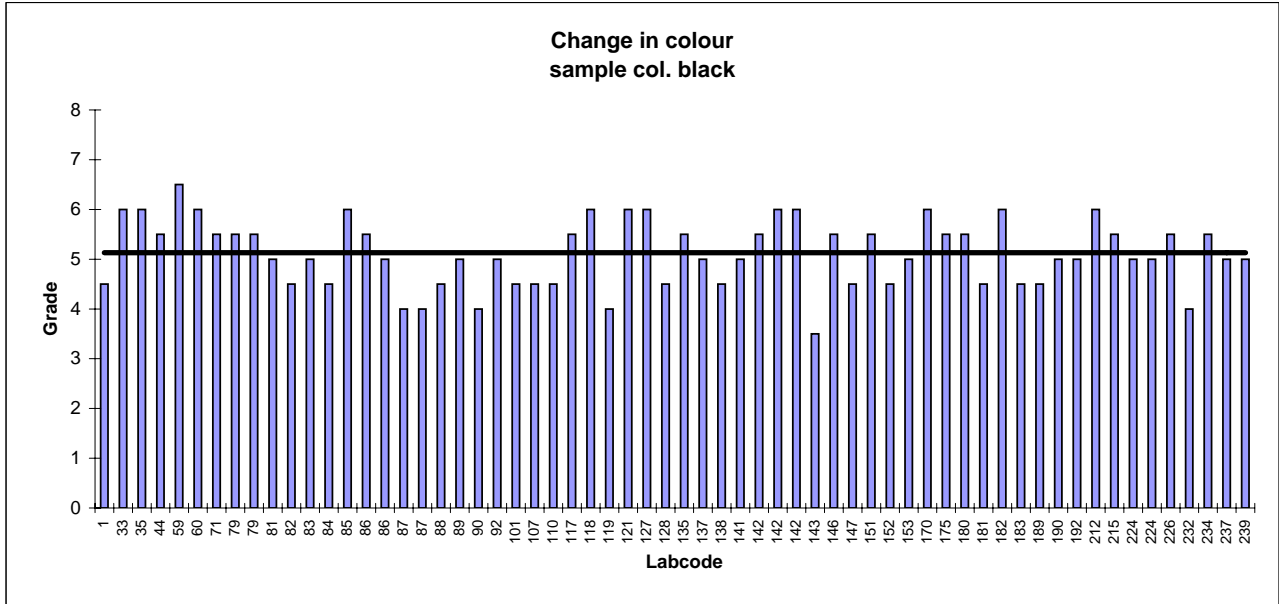


Muster: Garn, 100% PES, Farbe schwarz und grün

Sample: Yarn, 100% PES, colour black and green

Lichtechtheit / Fastness to light (ISO 105-B02)										
Lab Code	Testing apparatus	Sample room conditions				Intensity of irradiation		Exposure to light hrs	Change in colour according to blue scale grade for	
		°C	% humidity	Clocking mode	Reversing mode	(300-400nm) W/m ²	(420nm) W/m ²		col. Black	col. Green
1	Xenotest Alpha	35	40		x	35		192	4-5	4
33	Xenotest Beta	35	43		x	42		160	6	4-5
35	Xenotest Beta LM	50	40	x					6	x 5
44	Xenotest 150S+			x		x			5-6	3-4
59	Xenotest 150S+	45	40	x		39		72 / 324	x 6-7	3-4
60	Xenotest 150S	45	40			42		40	6	3-4
71	Xenotest Beta	50	40	x		42		300	5-6	4-5
79	Xenotest 150S (A0073)	20	65		x			231	5-6	4-5
79	Xenotest 150S (A1095)	20	65		x			231	5-6	4-5
81	Xenotest	21	66		x	x		120	5	4
82	ATLAS C1300	63	30	x		42		68 / 34	4-5	3
83	Xenotest Alpha	33	40	x		60		262	5	x 5-6
84	Xenotest Alpha	36	40	x					4-5	4-5
85	Xenotest 150S	45			x			237 / 47	6	4
86	Xenotest 150	50			x			147	5-6	3
86	Xenotest 150	50			x			147	5	3-4
87	Xenotest Alpha 1	36	41		x	50		200	4	x 5
87	Xenotest Alpha 2	36	41		x	50		200	4	x 5
88	Xenotest	25	66		x	74		500	4-5	4
89	Xenotest	20	65		x			164	5	4
90	Appolo	50	45		x	42		150	4	x 5
92	Xenotest Alpha LM-HE	35	40			x		280	5	3-4
101	Xenotest 150S	20	70		x	42		250	4-5	4
107	Xenotest Alpha LM	50	40		x	42		25	4-5	3-4
110	ATLAS Ci 35	30	55	x			1.1	78 / 150	4-5	3
117	Xenotest Alpha LM	35	40		x	50		171	5-6	4
118	Atlas CI 4000	63	30				1.1	80 / 20	6	3-4
119	Sun Test	21	65					120	4	4-5
121	Xenotest Alpha HE	40	35		x	42		80	6	4
127	Xenotest Alpha HE	50	40			42			6	x 5
128	Xenotest Apollo			x		x		65 / 40	4-5	x 1-2
135	Weather-Ometer Ci4000	63	30	x				101 / 92	5-6	3-4
137	Xenotest							80	5	3-4
138	Atlas CI 4000	20	65	x				43 / 11	4-5	3-4
141	ATLAS Ci 3000+	42	30	x			x	24	5	x 2
142	Xenotest Alpha+			x					5-6	3
142	Xenotest Alpha+			x					6	x 5
142	Xenotest Alpha+			x					6	3-4
143	ATLAS Ci 3000+	27	59						x 3-4	3-4
146	Xenotest	40	50					110	5-6	4
147	Xenotest 150S	46	39		x	1030		170	4-5	4
151	Xenotest							16	5-6	3
152	Megasol	20	65	x				36	4-5	2-3
153	Xenotest 150S	45	55	x					5	x 1-2
170	Xenotest ALPHA	50	40						6	3-4
175	Xenotest 150S	20	63	x				60 / 20	5-6	4
180	Xenotest Alpha	36	40	X		X			5-6	4-5
181	Xenotest Alpha HE	35	40	x		42		94 / 165	4-5	3-4
182	ATLAS Ci 3000	50		x			1.2		6	3
183	Xenotest 150	19	54			65		150	4-5	x 2
189	Xenotest Alpha LM	50	50			360		300	4-5	3
190	Xenotest Alpha	45	40			42		192	5	3-4
192	Xenotest 150S	38	50	x					5	3-4
212	Xenotest Atlas	36	40		x		x	186	6	x 5
215	Megasol	33	37		x			298	5-6	3-4
224	Weather-Ometer	63	30				1.1	50	5	x 2
224	Weather-Ometer	63	30				1.1	50	5	x 2
226	Xenotest Alpha	35	40	x					5-6	3-4
232	Atlas Ci 4000	48	30	x			x	20	4	2-3
234	Atlas Ci 4200	42	30	x			1.1	160 / 88	5-6	x 5-6
237	Atlas Ci 4000	48	40	x		42		277	5	4
239	Xenotest 150S+	35	20		x	42		225	5	4-5
n									61	61
Ø									5.13	3.70
s									0.68	0.94
Median									5	3-4

Lichtechtheit / Colour fastness to light
(ISO 105-B02)



Muster: Papiermuster 7, Farbe ocker

Sample: Paper pattern 7, colour ochre

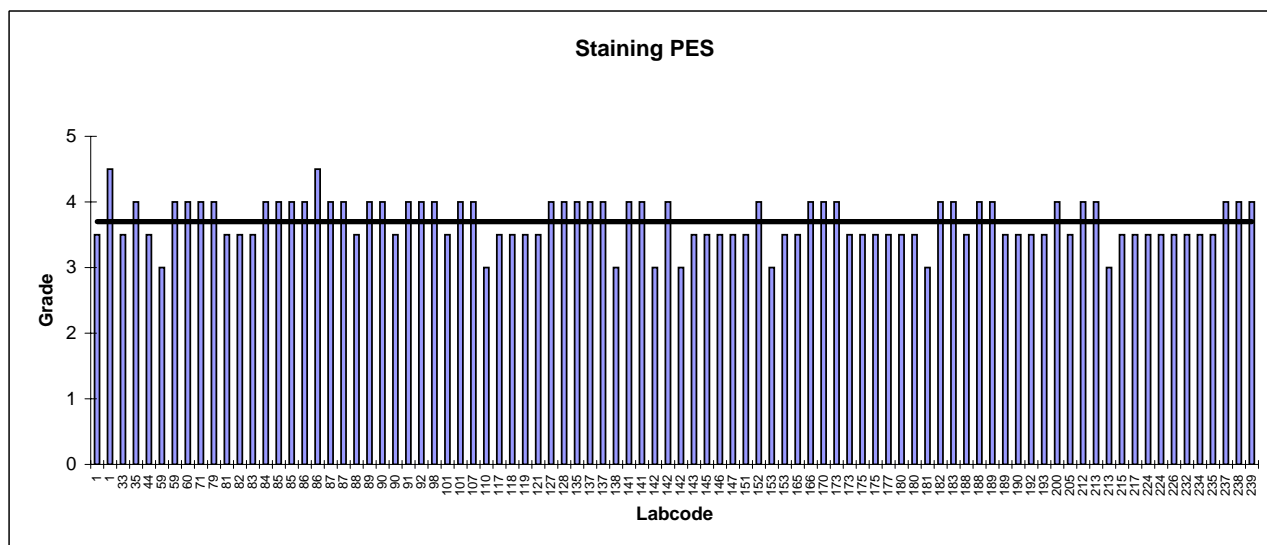
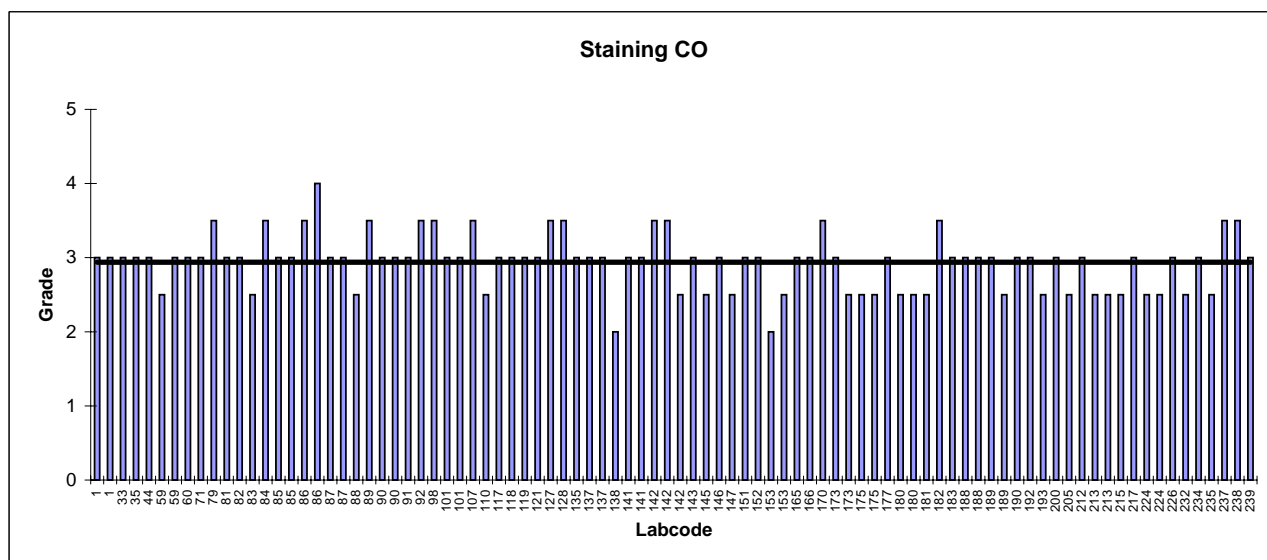
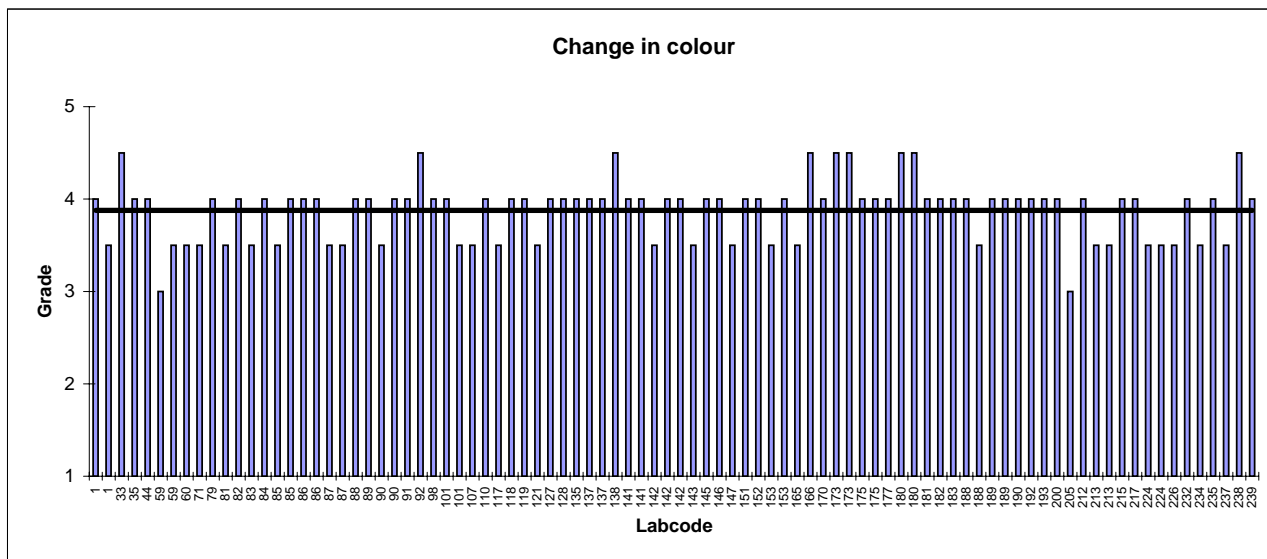
Bewertung von Papiermuster / Assessment of paper pattern (ISO 105/A01 - A04)					
Lab Code	Assessment		Change in colour	Staining CO	Staining PES
	visually	colour measurement			
1	x		4	3	3-4
1		x	3-4	3	4-5
33	x		4-5	3	3-4
35	x		4	3	4
44	x		4	3	3-4
59	x		3	2-3	3
59		x	3-4	3	4
60		x	3-4	3	4
71	x		3-4	3	4
79	x		4	3-4	4
81	x		3-4	3	3-4
82	x		4	3	3-4
83	x		3-4	2-3	3-4
84	x		4	3-4	4
85	x		3-4	3	4
85		x	4	3	4
86	x		4	3-4	4
86	x		4	4	4-5
87	x		3-4	3	4
87		x	3-4	3	4
88	x		4	2-3	3-4
89	x		4	3-4	4
90	x		3-4	3	4
90		x	4	3	3-4
91	x		4	3	4
92			4-5	3-4	4
98	x		4	3-4	4
101	x		4	3	3-4
101		x	3-4	3	4
107	x		3-4	3-4	4
110	x		4	2-3	3
117	x		3-4	3	3-4
118	x		4	3	3-4
119	x		4	3	3-4
121	x		3-4	3	3-4
127	x		4	3-4	4
128	x		4	3-4	4
135	x		4	3	4
137	x		4	3	4
137		x	4	3	4
138	x		4-5	2	3
141	x		4	3	4
141		x	4	3	4
142	x		3-4	3-4	3
142	x		4	3-4	4
142	x		4	2-3	3
143	x		3-4	3	3-4
145	x		4	2-3	3-4
146	x		4	3	3-4
147	x		3-4	2-3	3-4
151	x		4	3	3-4
152	x		4	3	4
153	x		3-4	2	3
153		x	4	2-3	3-4
165	x		3-4	3	3-4
166	x		4-5	3	4
170	x		4	3-4	4
173	x		4-5	3	4

Muster: Papiermuster 7, Farbe ocker

Sample: Paper pattern 7, colour ochre

Bewertung von Papiermuster / Assessment of paper pattern (ISO 105/A01 - A04)					
Lab Code	Assessment		Change in colour	Staining CO	Staining PES
	visually	colour measurement			
173	x		4-5	2-3	3-4
175	x		4	2-3	3-4
175		x	4	2-3	3-4
177	x		4	3	3-4
180	x		4-5	2-3	3-4
180		x	4-5	2-3	3-4
181	x		4	2-3	3
182	x		4	3-4	4
183	x		4	3	4
188	x		4	3	3-4
188	x		3-4	3	4
189	x		4	3	4
189		x	4	2-3	3-4
190	x		4	3	3-4
192	x		4	3	3-4
193	x		4	2-3	3-4
200	x		4	3	4
205	x		3	2-3	3-4
212	x		4	3	4
213		x	3-4	2-3	4
213	x		3-4	2-3	3
215	x		4	2-3	3-4
217	x		4	3	3-4
224	x		3-4	2-3	3-4
224	x		3-4	2-3	3-4
226	x		3-4	3	3-4
232	x		4	2-3	3-4
234	x		3-4	3	3-4
235	x		4	2-3	3-4
237	x		3-4	3-4	4
238	x		4-5	3-4	4
239	x		4	3	4
n			90	90	90
Ø			3.88	2.94	3.70
s			0.33	0.37	0.34
Median			4	3	3-4

**Bewertung von Papiermuster Nr. 7/ Assessment of paper pattern no. 7
(ISO 105/A01 - A04)**



Muster: Papiermuster 8, Farbe koralle

Sample: Paper pattern 8, colour coral

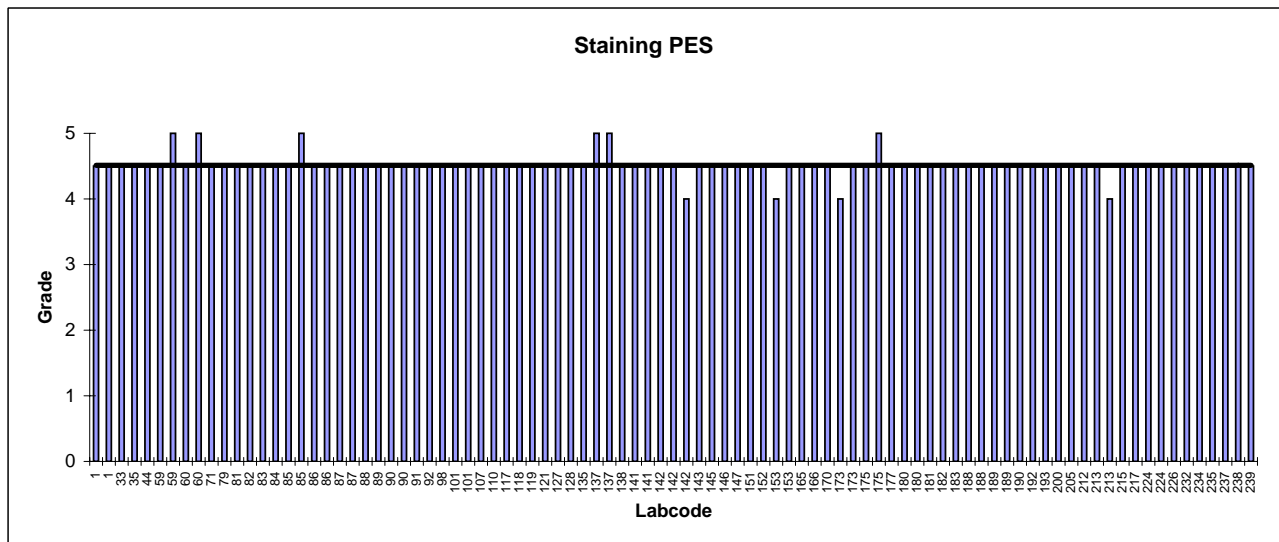
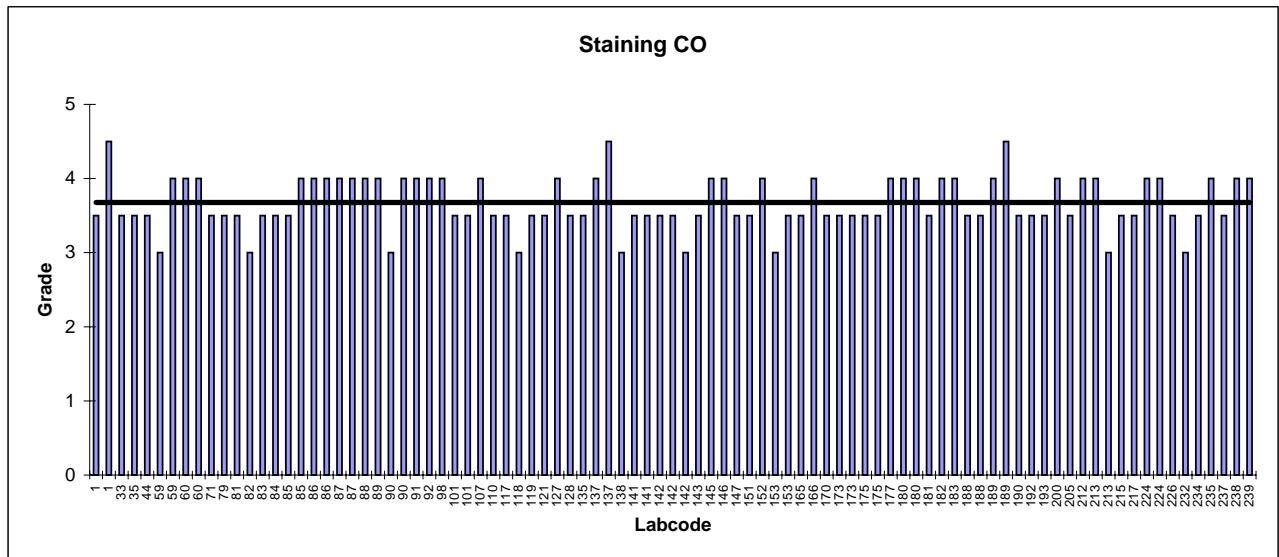
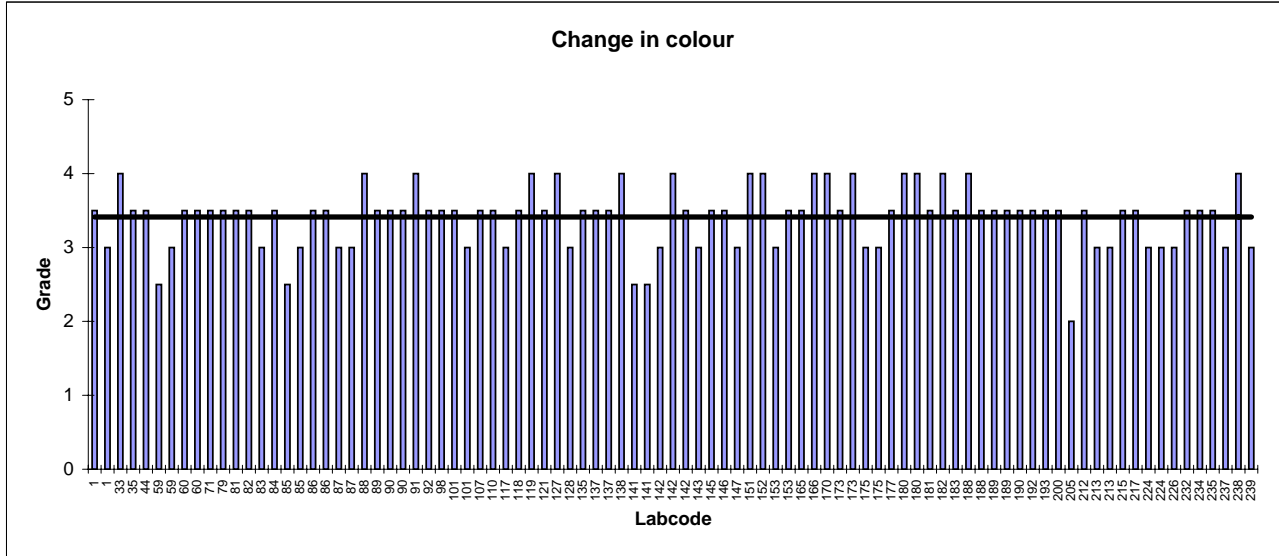
Bewertung von Papiermuster / Assessment of paper pattern (ISO 105/A01 - A04)					
Lab Code	Assessment		Change in colour	Staining CO	Staining PES
	visually	colour measurement			
1	x		3-4	3-4	4-5
1		x	3	4-5	4-5
33	x		4	3-4	4-5
35	x		3-4	3-4	4-5
44	x		3-4	3-4	4-5
59	x		2-3	3	4-5
59		x	3	4	5
60		x	3-4	4	4-5
60	x		3-4	4	5
71	x		3-4	3-4	4-5
79	x		3-4	3-4	4-5
81	x		3-4	3-4	4-5
82	x		3-4	3	4-5
83	x		3	3-4	4-5
84	x		3-4	3-4	4-5
85	x		2-3	3-4	4-5
85		x	3	4	5
86	x		3-4	4	4-5
86	x		3-4	4	4-5
87	x		3	4	4-5
87		x	3	4	4-5
88	x		4	4	4-5
89	x		3-4	4	4-5
90	x		3-4	3	4-5
90		x	3-4	4	4-5
91	x		4	4	4-5
92	x		3-4	4	4-5
98	x		3-4	4	4-5
101	x		3-4	3-4	4-5
101		x	3	3-4	4-5
107	x		3-4	4	4-5
110	x		3-4	3-4	4-5
117	x		3	3-4	4-5
118	x		3-4	3	4-5
119	x		4	3-4	4-5
121	x		3-4	3-4	4-5
127	x		4	4	4-5
128	x		3	3-4	4-5
135	x		3-4	3-4	4-5
137	x		3-4	4	5
137		x	3-4	4-5	5
138	x		4	3	4-5
141	x		2-3	3-4	4-5
141		x	2-3	3-4	4-5
142	x		3	3-4	4-5
142	x		4	3-4	4-5
142	x		3-4	3	4
143	x		3	3-4	4-5
145	x		3-4	4	4-5
146	x		3-4	4	4-5
147	x		3	3-4	4-5
151	x		4	3-4	4-5
152	x		4	4	4-5
153	x		3	3	4
153		x	3-4	3-4	4-5
165	x		3-4	3-4	4-5
166	x		4	4	4-5
170	x		4	3-4	4-5

Muster: Papiermuster 8, Farbe koralle

Sample: Paper pattern 8, colour coral

Bewertung von Papiermuster / Assessment of paper pattern (ISO 105/A01 - A04)					
Lab Code	Assessment		Change in colour	Staining CO	Staining PES
	visually	colour measurement			
173	x		3-4	3-4	4
173	x		4	3-4	4-5
175	x		3	3-4	4-5
175		x	3	3-4	5
177	x		3-4	4	4-5
180	x		4	4	4-5
180		x	4	4	4-5
181	x		3-4	3-4	4-5
182	x		4	4	4-5
183	x		3-4	4	4-5
188	x		4	3-4	4-5
188	x		3-4	3-4	4-5
189	x		3-4	4	4-5
189		x	3-4	4-5	4-5
190	x		3-4	3-4	4-5
192	x		3-4	3-4	4-5
193	x		3-4	3-4	4-5
200	x		3-4	4	4-5
205	x		x 2	3-4	4-5
212	x		3-4	4	4-5
213		x	3	4	4-5
213	x		3	3	4
215	x		3-4	3-4	4-5
217	x		3-4	3-4	4-5
224	x		3	4	4-5
224	x		3	4	4-5
226	x		3	3-4	4-5
232	x		3-4	3	4-5
234	x		3-4	3-4	4-5
235	x		3-4	4	4-5
237	x		3	3-4	4-5
238	x		4	4	4-5
239	x		3	4	4-5
n			91	91	91
Ø			3.41	3.68	4.51
s			0.41	0.35	0.17
Median			3-4	3-4	4-5

**Bewertung von Papiermuster Nr. 8 / Assessment of paper pattern no. 8
(ISO 105/A01 - A04)**



Lab Code	Bezugsquelle Begleitgewebe Source of supply of adjacent fabrics
1	EMPA Testmaterials
33	?
35	Ausiliari Tessili - Cornaredo - Milano
44	?
59	EMPA Testmaterials
60	?
71	Testex Prüftextilien Germany *
79	James Heal
81	Testex Prüftextilien Germany *
82	?
83	SDC / James H. Heal
84	Testex Prüftextilien Germany *
85	Testfabrics Inc.
86	SDC
87	James H. Heal
88	Testex Prüftextilien Germany * / James H. Heal
89	James H.Heal
90	Dutest Agencies
91	?
92	?
98	?
101	SDC
102	Spectroflash DSF 500
107	?
109	Testex Prüftextilien Germany *
110	SDC
111	James H. Heal
113	?
116	SDC
117	James H. Heal
118	James H. Heal
119	Testfabrics Inc.
121	Testex Prüftextilien Germany *
127	SDC
128	James H. Heal
133	SDC
135	SDL
137	?
138	Testfabrics Inc.
141	?
142	?
143	Paramount
145	James H. Heal
146	SDL Atlas
147	James H.Heal / Testfabrics Inc.
151	Testfabrics Inc.
152	?
153	?
163	?
165	Testex Prüftextilien Germany *
166	Testex Prüftextilien Germany * / James H.Heal
170	Testfabrics Inc.
173	Testex Prüftextilien Germany *
175	SDL Atlas
177	?
179	SDC
180	Testex Prüftextilien Germany *
181	wfk Testgewebe GmbH
182	?
183	?
188	SDC / SDL Atlas
189	SDC
190	?
192	James H.Heal
193	SDC
200	?
205	SDC
209	?
210	Testex Prüftextilien Germany *
211	Testex Prüftextilien Germany *
212	Testex Prüftextilien Germany *
213	SDL, Atlas
215	?
217	Testfabrics Inc.
221	Testex Prüftextilien Germany *
223	?
224	SDL
226	Testfabrics Inc.
232	SDC
234	SDC Multifibre
235	James H. Heal
237	?
238	SDL Atlas
239	Testfabrics Inc.

* = Keine Verwandtschaft mit TESTEX Zürich - No relations with TESTEX Zürich

Lexikon / Dictionary

Abkürzungen Abbreviations	Deutsch	English
n	Anzahl Werte	Number of values
Median	Median	Median
Ø	Mittelwert	Mean value
s	Standardabweichung	Standard deviation
hrs	Stunden	Hours
°C	Temperatur	Temperature
W/m ²	Watt pro Quadratmeter	Watt per square meter
CA	2½ Azetat	2½ Acetate
CO	Baumwolle	Cotton
CT	Triazetat	Triacetate
CV	Viskose	Viscose
PA	Polyamid	Polyamide
PAN	Polyacryl	Acrylic
PES	Polyester	Polyester
SE	Seide	Silk
WO	Wolle	Wool
	Anbluten	Staining
	Anbluten des Lösemittels	Staining of solvent agent
	Belichtungszeit	Exposure to light
	Bestrahlungsstärke	Intensity of irradiation
	Beurteilung	Assessment
	Bewertungsnote	Grade
	Einzelfaser	Single fibre
	Farbmetrisch	Colour measurement (Col. meas.)
	Farbtonänderung	Change in colour
	Feuchtigkeit in %	% humidity
	Lösemittel	Solvent agent
	Mehrfaser	Multi fibre
	Nass	Wet
	Probenraumkonditionen	Sample room conditions
	Prüfgerät	Testing apparatus
	Trocken	Dry
	Visuell	Visually